

## Product datasheet for **TA345205**

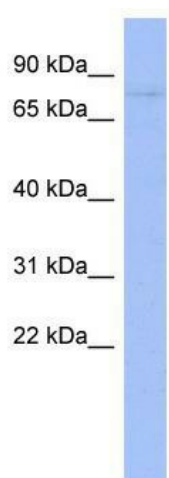
### Zfp219 (ZNF219) Rabbit Polyclonal Antibody

#### Product data:

Product Type:	Primary Antibodies
Applications:	WB
Recommended Dilution:	WB
Reactivity:	Human
Host:	Rabbit
Isotype:	IgG
Clonality:	Polyclonal
Immunogen:	The immunogen for anti-ZNF219 antibody: synthetic peptide directed towards the middle region of human ZNF219. Synthetic peptide located within the following region: RARGRRPPQADASPPYARVPSGETPPSPSQEGEEGSLSRPGEAGLGGQE
Formulation:	Liquid. Purified antibody supplied in 1x PBS buffer with 0.09% (w/v) sodium azide and 2% sucrose. <i>Note that this product is shipped as lyophilized powder to China customers.</i>
Purification:	Affinity Purified
Conjugation:	Unconjugated
Storage:	Store at -20°C as received.
Stability:	Stable for 12 months from date of receipt.
Predicted Protein Size:	77 kDa
Gene Name:	zinc finger protein 219
Database Link:	<a href="#">NP_057507</a> <a href="#">Entrez Gene 51222 Human</a> <a href="#">Q9P2Y4</a>
Background:	ZNF219 may be involved in transcriptional regulation.
Synonyms:	ZFP219
Note:	Immunogen Sequence Homology: Human: 100%; Dog: 92%; Horse: 86%; Rabbit: 79%
Protein Families:	Transcription Factors



[View online »](#)

**Product images:**

WB Suggested Anti-ZNF219 Antibody Titration:  
0.2-1 ug/ml; ELISA Titer: 1: 62500; Positive  
Control: Human Thymus