

## Product datasheet for **TA345204**

### GTF2IRD1 Rabbit Polyclonal Antibody

#### Product data:

Product Type:	Primary Antibodies
Applications:	IHC, WB
Recommended Dilution:	WB, IHC
Reactivity:	Human
Host:	Rabbit
Isotype:	IgG
Clonality:	Polyclonal
Immunogen:	The immunogen for anti-GTF2IRD1 antibody: synthetic peptide directed towards the C terminal of human GTF2IRD1. Synthetic peptide located within the following region: VIINQLQPFAEICNDAKVPKADSSIPKRKRKRKRVSEGNVSSSSSSSSSSSS
Formulation:	Liquid. Purified antibody supplied in 1x PBS buffer with 0.09% (w/v) sodium azide and 2% sucrose. <i>Note that this product is shipped as lyophilized powder to China customers.</i>
Purification:	Protein A purified
Conjugation:	Unconjugated
Storage:	Store at -20°C as received.
Stability:	Stable for 12 months from date of receipt.
Predicted Protein Size:	106 kDa
Gene Name:	GTF2I repeat domain containing 1
Database Link:	<a href="#">NP_057412</a> <a href="#">Entrez Gene 9569 Human</a> <a href="#">Q9UHL9</a>



[View online »](#)

**Background:**

GTF2IRD1 contains five GTF2I-like repeats and each repeat possesses a potential helix-loop-helix (HLH) motif. It may have the ability to interact with other HLH-proteins and function as a transcription factor or as a positive transcriptional regulator under the control of Retinoblastoma protein. GTF2IRD1 is related to Williams-Beuren syndrome, a multisystem developmental disorder. Western blots using three different antibodies against three unique regions of this protein target confirm the same apparent molecular weight in our tests. The protein encoded by this gene contains five GTF2I-like repeats and each repeat possesses a potential helix-loop-helix (HLH) motif. It may have the ability to interact with other HLH-proteins and function as a transcription factor or as a positive transcriptional regulator under the control of Retinoblastoma protein. This gene is deleted in Williams-Beuren syndrome, a multisystem developmental disorder caused by deletion of multiple genes at 7q11.23. Alternative splicing of this gene generates at least 2 transcript variants.

**Synonyms:**

BEN; CREAM1; GTF3; hMusTRD1alpha1; MUSTRD1; RBAP2; WBS; WBSR11; WBSR12

**Note:**

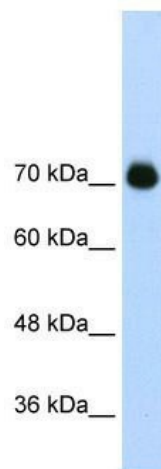
Immunogen Sequence Homology: Dog: 100%; Pig: 100%; Rat: 100%; Human: 100%; Mouse: 100%; Bovine: 100%; Rabbit: 100%; Guinea pig: 100%; Yeast: 79%

**Protein Families:**

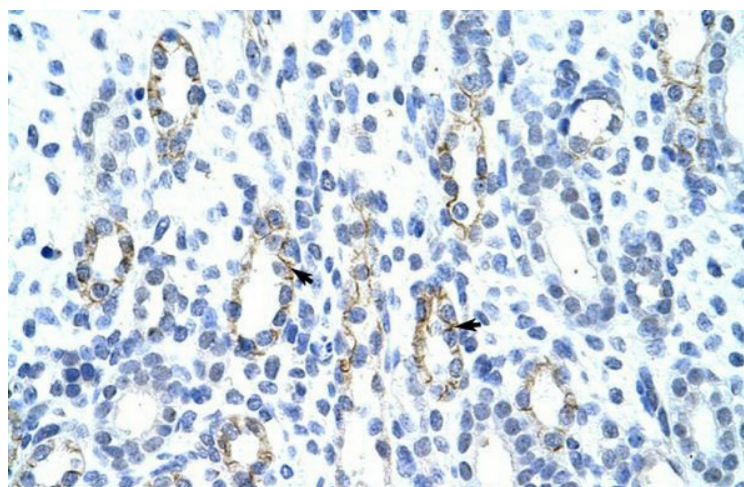
Druggable Genome, Transcription Factors

**Protein Pathways:**

Basal transcription factors

**Product images:**

WB Suggested Anti-GTF2IRD1 Antibody Titration:  
2.5 ug/ml; ELISA Titer: 1: 312500; Positive Control:  
Transfected 293T



Human kidney