

## Product datasheet for **TA345201**

### Tcea1 Rabbit Polyclonal Antibody

#### Product data:

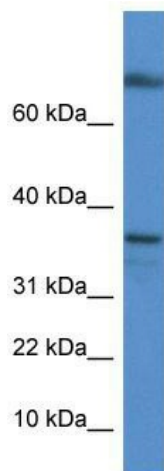
Product Type:	Primary Antibodies
Applications:	WB
Recommended Dilution:	WB
Reactivity:	Mouse
Host:	Rabbit
Isotype:	IgG
Clonality:	Polyclonal
Immunogen:	The immunogen for anti-Tcea1 antibody: synthetic peptide corresponding to a region of Rat. Synthetic peptide located within the following region: AKTGGTQDLFTCGKCKKKNCTYTQVQTRSADEPMTTFVVCNECGNRWKF
Formulation:	Liquid. Purified antibody supplied in 1x PBS buffer with 0.09% (w/v) sodium azide and 2% sucrose. <i>Note that this product is shipped as lyophilized powder to China customers.</i>
Purification:	Affinity Purified
Conjugation:	Unconjugated
Storage:	Store at -20°C as received.
Stability:	Stable for 12 months from date of receipt.
Predicted Protein Size:	33 kDa
Gene Name:	transcription elongation factor A (SII) 1
Database Link:	<a href="#">NP_001020906</a> <a href="#">Entrez Gene 21399 Mouse</a> <a href="#">Q4KLL0</a>
Background:	Tcea1 is necessary for efficient RNA polymerase II transcription elongation past template-encoded arresting sites. The arresting sites in DNA have the property of trapping a certain fraction of elongating RNA polymerases that pass through, resulting in locked ternary complexes. Cleavage of the nascent transcript by S-II allows the resumption of elongation from the new 3'-terminus.
Synonyms:	MGC116288; S-II



[View online »](#)

**Note:** Immunogen Sequence Homology: Dog: 100%; Pig: 100%; Rat: 100%; Horse: 100%; Human: 100%; Mouse: 100%; Bovine: 100%; Rabbit: 100%; Zebrafish: 100%; Guinea pig: 100%; Goat: 93%; Yeast: 93%

## Product images:



WB Suggested Anti-Tcea1 Antibody; Titration: 1.0 ug/ml; Positive Control: Mouse Kidney