

Product datasheet for **TA345195**

TLX2 Rabbit Polyclonal Antibody

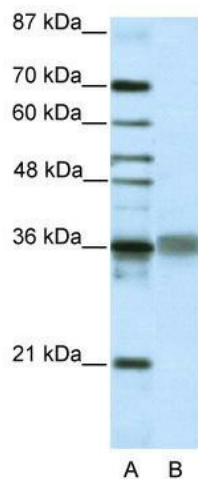
Product data:

Product Type:	Primary Antibodies
Applications:	IHC, WB
Recommended Dilution:	WB, IHC
Reactivity:	Human
Host:	Rabbit
Isotype:	IgG
Clonality:	Polyclonal
Immunogen:	The immunogen for anti-TLX2 antibody: synthetic peptide directed towards the C terminal of human TLX2. Synthetic peptide located within the following region: QQDALPRPLRPPLPPDPLCLHNSSLFALQNLQPWAEDNKVASVSGLASV
Formulation:	Liquid. Purified antibody supplied in 1x PBS buffer with 0.09% (w/v) sodium azide and 2% sucrose. <i>Note that this product is shipped as lyophilized powder to China customers.</i>
Purification:	Protein A purified
Conjugation:	Unconjugated
Storage:	Store at -20°C as received.
Stability:	Stable for 12 months from date of receipt.
Predicted Protein Size:	30 kDa
Gene Name:	T-cell leukemia homeobox 2
Database Link:	NP_057254 Entrez Gene 3196 Human O43763
Background:	TLX2 contains 1 homeobox DNA-binding domain and the function remains unknown.
Synonyms:	HOX11L1; NCX
Note:	Immunogen Sequence Homology: Dog: 100%; Pig: 100%; Rat: 100%; Human: 100%; Mouse: 100%; Bovine: 100%; Rabbit: 100%; Zebrafish: 100%; Guinea pig: 100%
Protein Families:	Transcription Factors

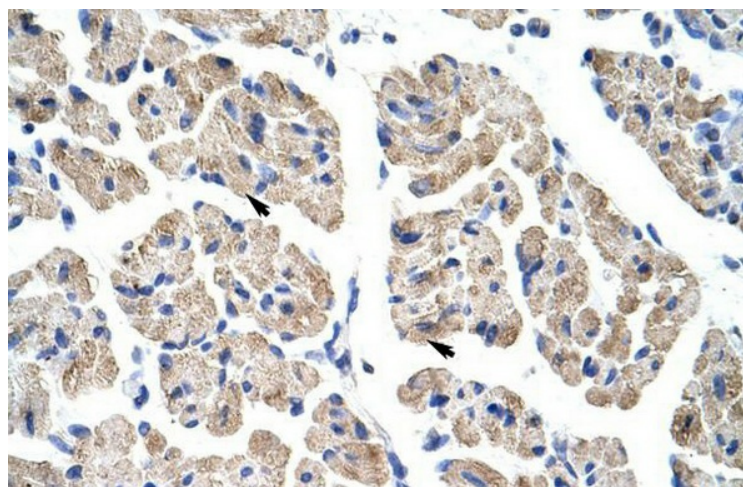


[View online »](#)

Product images:



WB Suggested Anti-TLX2 Antibody Titration: 2.5 ug/ml; ELISA Titer: 1: 312500; Positive Control: HepG2 cell lysate



Human Muscle