

Product datasheet for **TA345194**

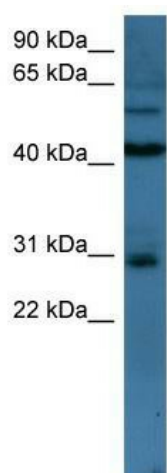
TLX2 Rabbit Polyclonal Antibody

Product data:

Product Type:	Primary Antibodies
Applications:	WB
Recommended Dilution:	WB
Reactivity:	Human
Host:	Rabbit
Isotype:	IgG
Clonality:	Polyclonal
Immunogen:	The immunogen for anti-TLX2 antibody: synthetic peptide directed towards the N terminal of human TLX2. Synthetic peptide located within the following region: MEPGMLGPHNLPHHEPISFGIDQILSGPETPGGGLGLGRGGQGHGENGAF
Formulation:	Liquid. Purified antibody supplied in 1x PBS buffer with 0.09% (w/v) sodium azide and 2% sucrose.
Purification:	Affinity Purified
Conjugation:	Unconjugated
Storage:	Store at -20°C as received.
Stability:	Stable for 12 months from date of receipt.
Predicted Protein Size:	30 kDa
Gene Name:	T-cell leukemia homeobox 2
Database Link:	NP_057254 Entrez Gene 3196 Human O43763
Background:	TLX2 contains 1 homeobox DNA-binding domain and the function remains unknown.
Synonyms:	HOX11L1; NCX
Note:	Immunogen Sequence Homology: Human: 100%; Pig: 79%; Rat: 79%; Bovine: 79%; Rabbit: 79%; Guinea pig: 79%
Protein Families:	Transcription Factors



[View online »](#)

Product images:

WB Suggested Anti-TLX2 Antibody Titration: 0.2-1 ug/ml; ELISA Titer: 1: 1562500; Positive Control: 721_B cell lysate; TLX2 is strongly supported by BioGPS gene expression data to be expressed in Human 721_B cells