

Product datasheet for **TA345193**

Suppressor of Fused (SUFU) Rabbit Polyclonal Antibody

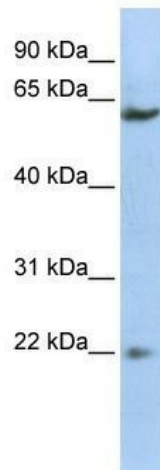
Product data:

Product Type:	Primary Antibodies
Applications:	IHC, WB
Recommended Dilution:	WB, IHC
Reactivity:	Human, Mouse
Host:	Rabbit
Isotype:	IgG
Clonality:	Polyclonal
Immunogen:	The immunogen for anti-SUFU antibody: synthetic peptide directed towards the middle region of human SUFU. Synthetic peptide located within the following region: LQILLTEEFVEKMLEDLEDLTSPEEFKLPKEYSWPEKCLKVSILPDVWFD
Formulation:	Liquid. Purified antibody supplied in 1x PBS buffer with 0.09% (w/v) sodium azide and 2% sucrose. <i>Note that this product is shipped as lyophilized powder to China customers.</i>
Purification:	Affinity Purified
Conjugation:	Unconjugated
Storage:	Store at -20°C as received.
Stability:	Stable for 12 months from date of receipt.
Predicted Protein Size:	54 kDa
Gene Name:	SUFU negative regulator of hedgehog signaling
Database Link:	NP_057253 Entrez Gene 24069 Mouse Entrez Gene 51684 Human Q9UMX1

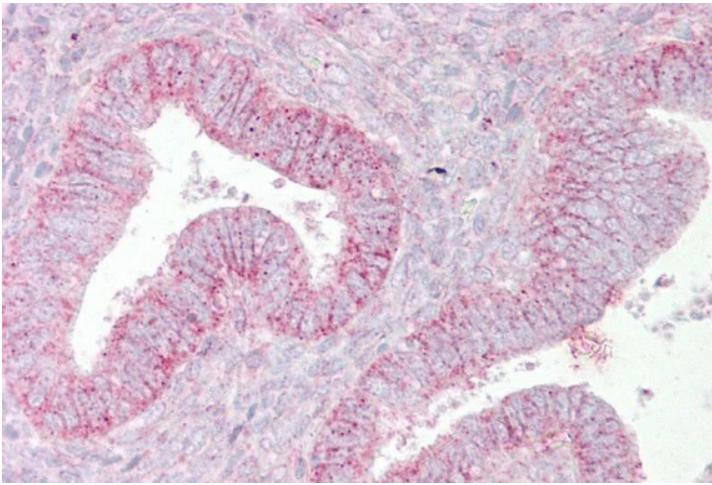


[View online »](#)

- Background:** SUFU is a component of the Sonic hedgehog (SHH; MIM 600725)/Patched (PTCH; MIM 601309) signaling pathway. Mutations in genes encoding components of this pathway are deleterious for normal development and are associated with cancer-predisposing syndromes. SUFU encodes a component of the sonic hedgehog (SHH; MIM 600725)/patched (PTCH; MIM 601309) signaling pathway. Mutations in genes encoding components of this pathway are deleterious for normal development and are associated with cancer-predisposing syndromes (e.g., HPE3, MIM 142945; BCNS, MIM 109400; and GCPS, MIM 175700). [supplied by OMIM]. Publication Note: This RefSeq record includes a subset of the publications that are available for this gene. Please see the Entrez Gene record to access additional publications.
- Synonyms:** PRO1280; SUFUH; SUFUXL
- Note:** Immunogen Sequence Homology: Dog: 100%; Pig: 100%; Rat: 100%; Horse: 100%; Human: 100%; Mouse: 100%; Rabbit: 100%; Guinea pig: 100%; Zebrafish: 93%
- Protein Families:** Druggable Genome, Transcription Factors
- Protein Pathways:** Basal cell carcinoma, Hedgehog signaling pathway, Pathways in cancer

Product images:

WB Suggested Anti-SUFU Antibody Titration: 0.2-1 ug/ml; ELISA Titer: 1: 1562500; Positive Control: HepG2 cell lysate



Immunohistochemistry with Uterus tissue at an antibody concentration of 5 ug/ml using anti-SUFU antibody