

## Product datasheet for **TA345192**

### PIAS1 Rabbit Polyclonal Antibody

#### Product data:

Product Type:	Primary Antibodies
Applications:	WB
Recommended Dilution:	WB
Reactivity:	Human
Host:	Rabbit
Isotype:	IgG
Clonality:	Polyclonal
Immunogen:	The immunogen for anti-PIAS1 antibody: synthetic peptide directed towards the middle region of human PIAS1. Synthetic peptide located within the following region: LPTTNGSSSGSNSSLVSSNSLRSHSHTVTNRSSTDTASIFGIIPDIISL
Formulation:	Liquid. Purified antibody supplied in 1x PBS buffer with 0.09% (w/v) sodium azide and 2% sucrose. <i>Note that this product is shipped as lyophilized powder to China customers.</i>
Purification:	Affinity Purified
Conjugation:	Unconjugated
Storage:	Store at -20°C as received.
Stability:	Stable for 12 months from date of receipt.
Predicted Protein Size:	72 kDa
Gene Name:	protein inhibitor of activated STAT 1
Database Link:	<a href="#">NP_057250</a> <a href="#">Entrez Gene 8554 Human</a> <a href="#">O75925</a>
Background:	PIAS1 is a member of the mammalian PIAS [protein inhibitor of activated STAT-1 (signal transducer and activator of transcription-1)] family. This member contains a putative zinc-binding motif and a highly acidic region. It inhibits STAT1-mediated gene act
Synonyms:	DDXBP1; GBP; GU; RH-II; ZMIZ3
Note:	Immunogen Sequence Homology: Human: 100%; Dog: 93%; Horse: 79%; Bovine: 79%

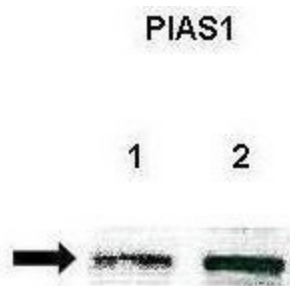


[View online »](#)

**Protein Families:** Druggable Genome, Transcription Factors

**Protein Pathways:** Jak-STAT signaling pathway, Pathways in cancer, Small cell lung cancer, Ubiquitin mediated proteolysis

**Product images:**



Lanes: Lane 1: Untreated human U251 lysate; Lane 2: IL-1beta treated human U251 lysate; Primary Antibody Dilution: 1: 500; Secondary Antibody: Anti-rabbit-HRP; Secondary Antibody Dilution: 1: 500; Gene Name: PIAS1; Submitted by: Anonymous;



WB Suggested Anti-PIAS1 Antibody Titration: 0.2-1 ug/ml; ELISA Titer: 1: 312500; Positive Control: COLO205 cell lysate; There is BioGPS gene expression data showing that PIAS1 is expressed in COLO205