

## Product datasheet for **TA345189**

### ZFR Rabbit Polyclonal Antibody

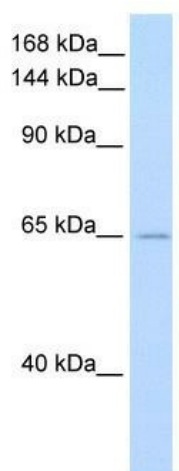
#### Product data:

Product Type:	Primary Antibodies
Applications:	WB
Recommended Dilution:	WB
Reactivity:	Human
Host:	Rabbit
Isotype:	IgG
Clonality:	Polyclonal
Immunogen:	The immunogen for anti-ZFR antibody: synthetic peptide directed towards the C terminal of human ZFR. Synthetic peptide located within the following region: QIHKVLGMDPLPQMSQRFNIHNNRKRRRDSDGVDGFEGKDKDYDNF
Formulation:	Liquid. Purified antibody supplied in 1x PBS buffer with 0.09% (w/v) sodium azide and 2% sucrose.
Purification:	Affinity Purified
Conjugation:	Unconjugated
Storage:	Store at -20°C as received.
Stability:	Stable for 12 months from date of receipt.
Predicted Protein Size:	67 kDa
Gene Name:	zinc finger RNA binding protein
Database Link:	<a href="#">NP_057191</a> <a href="#">Entrez Gene 51663 Human</a> <a href="#">Q96KR1</a>
Background:	ZFR is critical for Staufen 2 isoform specific nucleocytoplasmic shuttling in neurons.
Synonyms:	SPG71; ZFR1
Note:	Immunogen Sequence Homology: Dog: 100%; Rat: 100%; Horse: 100%; Human: 100%; Mouse: 100%; Bovine: 100%; Rabbit: 100%; Zebrafish: 77%



[View online »](#)

## Product images:



WB Suggested Anti-ZFR Antibody Titration: 0.2-1 ug/ml; ELISA Titer: 1: 312500; Positive Control: Human brain