

Product datasheet for **TA345188**

KLHL5 Rabbit Polyclonal Antibody

Product data:

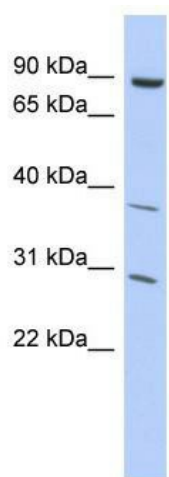
Product Type:	Primary Antibodies
Applications:	WB
Recommended Dilution:	WB
Reactivity:	Human
Host:	Rabbit
Isotype:	IgG
Clonality:	Polyclonal
Immunogen:	The immunogen for anti-KLHL5 antibody: synthetic peptide directed towards the middle region of human KLHL5. Synthetic peptide located within the following region: LLGDKLYAVGGYDGGQAYLNTVEAYDPQTNEWTQVAPLCLGRAGACVTVK
Formulation:	Liquid. Purified antibody supplied in 1x PBS buffer with 0.09% (w/v) sodium azide and 2% sucrose.
Purification:	Affinity Purified
Conjugation:	Unconjugated
Storage:	Store at -20°C as received.
Stability:	Stable for 12 months from date of receipt.
Predicted Protein Size:	84 kDa
Gene Name:	kelch like family member 5
Database Link:	NP_057074 Entrez Gene 51088 Human Q96PQ7
Background:	The kelch-repeat protein family is a recently found new kind of actin-binding protein. It is characterized by tandemly arranged motifs of about 50 amino acids. Most members of the kelch-repeat family were cytoskeletal proteins implicated in various cellu
Synonyms:	DKFZp586M1418; FLJ11313
Note:	Immunogen Sequence Homology: Dog: 100%; Pig: 100%; Horse: 100%; Human: 100%; Bovine: 100%; Rabbit: 100%; Zebrafish: 100%; Guinea pig: 100%; Rat: 93%; Mouse: 93%



[View online »](#)

Protein Families: Transmembrane

Product images:



WB Suggested Anti-KLHL5 Antibody Titration: 0.2-1 ug/ml; ELISA Titer: 1: 312500; Positive Control: THP-1 cell lysate