

Product datasheet for **TA345187**

KLHL5 Rabbit Polyclonal Antibody

Product data:

Product Type:	Primary Antibodies
Applications:	WB
Recommended Dilution:	WB
Reactivity:	Human
Host:	Rabbit
Isotype:	IgG
Clonality:	Polyclonal
Immunogen:	The immunogen for anti-KLHL5 antibody: synthetic peptide directed towards the n terminal of human KLHL5. Synthetic peptide located within the following region: MSGSRKEFDVKQILKIRRWFGHQASSPNSTVDSQQGEFWNRGQTGANGG
Formulation:	Liquid. Purified antibody supplied in 1x PBS buffer with 0.09% (w/v) sodium azide and 2% sucrose.
Purification:	Affinity Purified
Conjugation:	Unconjugated
Storage:	Store at -20°C as received.
Stability:	Stable for 12 months from date of receipt.
Predicted Protein Size:	79 kDa
Gene Name:	kelch like family member 5
Database Link:	NP_001007076 Entrez Gene 51088 Human Q96PQ7



[View online »](#)

Background:

The kelch-repeat protein family is a recently found new kind of actin-binding protein. It is characterized by tandemly arranged motifs of about 50 amino acids. Most members of the kelch-repeat family were cytoskeletal proteins implicated in various cellular processes, such as actin cytoskeleton interaction, cytoplasmic sequestration of transcription factors and cell morphology. During the large-scale sequencing analysis of a human fetal brain cDNA library we found a novel kelch-like protein gene 5, KLHL5, KLHL5 has high identity with Drosophila kelch protein and many other family members. A novel splicing variants of KLHL5, named KLHL5b and the expression pattern of KLHL5b in many tissues.

Synonyms:

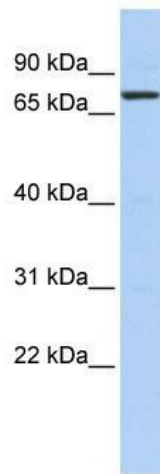
DKFZp586M1418; FLJ11313

Note:

Immunogen Sequence Homology: Dog: 100%; Pig: 100%; Rat: 100%; Horse: 100%; Human: 100%; Mouse: 100%; Bovine: 100%; Guinea pig: 100%; Rabbit: 77%; Zebrafish: 75%

Protein Families:

Transmembrane

Product images:

WB Suggested Anti-KLHL5 Antibody Titration: 0.2-1 ug/ml; ELISA Titer: 1: 1562500; Positive Control: HeLa cell lysate