

Product datasheet for **TA345185**

Lipolysis Stimulated Lipoprotein Receptor (LSR) Rabbit Polyclonal Antibody

Product data:

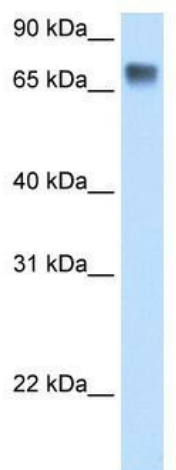
| | |
|-------------------------|---|
| Product Type: | Primary Antibodies |
| Applications: | WB |
| Recommended Dilution: | WB |
| Reactivity: | Human |
| Host: | Rabbit |
| Isotype: | IgG |
| Clonality: | Polyclonal |
| Immunogen: | The immunogen for anti-LSR antibody: synthetic peptide directed towards the C terminal of human LSR. Synthetic peptide located within the following region: RKKGSEERRRPHKEEEEEAYPPAPPYSETDSQASRERRLKKNLALSRE |
| Formulation: | Liquid. Purified antibody supplied in 1x PBS buffer with 0.09% (w/v) sodium azide and 2% sucrose. <i>Note that this product is shipped as lyophilized powder to China customers.</i> |
| Purification: | Affinity Purified |
| Conjugation: | Unconjugated |
| Storage: | Store at -20°C as received. |
| Stability: | Stable for 12 months from date of receipt. |
| Predicted Protein Size: | 69 kDa |
| Gene Name: | lipolysis stimulated lipoprotein receptor |
| Database Link: | NP_057009 Entrez Gene 51599 Human Q86X29 |
| Background: | LSR has a probable role in the clearance of triglyceride-rich lipoprotein from blood. It binds chylomicrons, LDL and VLDL in presence of free fatty acids and allows their subsequent uptake in the cells. |
| Synonyms: | ILDR3; LISCH7 |
| Note: | Immunogen Sequence Homology: Dog: 100%; Rat: 100%; Horse: 100%; Human: 100%; Mouse: 100%; Bovine: 100%; Rabbit: 100%; Pig: 92%; Guinea pig: 92% |



[View online »](#)

Protein Families: Druggable Genome, Transcription Factors, Transmembrane

Product images:



WB Suggested Anti-LSR Antibody Titration: 0.2-1 ug/ml; ELISA Titer: 1: 62500; Positive Control: Human Liver