

Product datasheet for **TA345184**

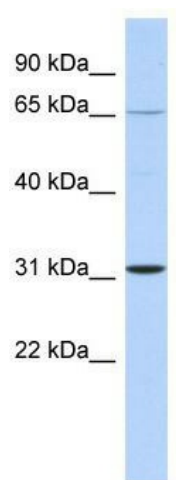
ZNF691 Rabbit Polyclonal Antibody

Product data:

Product Type:	Primary Antibodies
Applications:	WB
Recommended Dilution:	WB
Reactivity:	Human
Host:	Rabbit
Isotype:	IgG
Clonality:	Polyclonal
Immunogen:	The immunogen for anti-ZNF691 antibody: synthetic peptide directed towards the middle region of human ZNF691. Synthetic peptide located within the following region: SDISNFGAHQRTHRGEKPYRCTVCGKHFSRSSNLIRHQKTHLGEQAGKDS
Formulation:	Liquid. Purified antibody supplied in 1x PBS buffer with 0.09% (w/v) sodium azide and 2% sucrose.
Purification:	Affinity Purified
Conjugation:	Unconjugated
Storage:	Store at -20°C as received.
Stability:	Stable for 12 months from date of receipt.
Predicted Protein Size:	32 kDa
Gene Name:	zinc finger protein 691
Database Link:	NP_056995 Entrez Gene 51058 Human Q5VV52
Background:	ZNF691 may be involved in transcriptional regulation.
Synonyms:	Zfp691
Note:	Immunogen Sequence Homology: Dog: 100%; Human: 100%; Horse: 93%; Pig: 86%; Rat: 86%; Mouse: 85%; Bovine: 79%



[View online »](#)

Product images:


WB Suggested Anti-ZNF691 Antibody Titration:
0.2-1 ug/ml; ELISA Titer: 1: 312500; Positive
Control: Human brain