

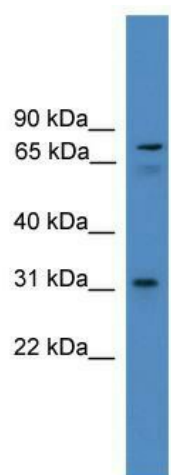
Product datasheet for **TA345183**

ZNF691 Rabbit Polyclonal Antibody

Product data:

| | |
|-------------------------|---|
| Product Type: | Primary Antibodies |
| Applications: | WB |
| Recommended Dilution: | WB |
| Reactivity: | Human |
| Host: | Rabbit |
| Isotype: | IgG |
| Clonality: | Polyclonal |
| Immunogen: | The immunogen for anti-ZNF691 antibody: synthetic peptide directed towards the N terminal of human ZNF691. Synthetic peptide located within the following region: MGSEKEQSPEPHLPEEGEGGKPWRVDDSEGSWIPPGEKEHGQESLSDELQ |
| Formulation: | Liquid. Purified antibody supplied in 1x PBS buffer with 0.09% (w/v) sodium azide and 2% sucrose. |
| Purification: | Affinity Purified |
| Conjugation: | Unconjugated |
| Storage: | Store at -20°C as received. |
| Stability: | Stable for 12 months from date of receipt. |
| Predicted Protein Size: | 32 kDa |
| Gene Name: | zinc finger protein 691 |
| Database Link: | NP_056995 Entrez Gene 51058 Human Q5VV52 |
| Background: | ZNF691 may be involved in transcriptional regulation. |
| Synonyms: | Zfp691 |
| Note: | Immunogen Sequence Homology: Human: 100%; Dog: 93%; Horse: 93%; Rabbit: 93%; Rat: 92%; Pig: 90%; Guinea pig: 90%; Bovine: 86%; Mouse: 85% |


[View online »](#)

Product images:


WB Suggested Anti-ZNF691 Antibody Titration:
0.2-1 ug/ml; ELISA Titer: 1: 312500; Positive
Control: HT1080 cell lysate