

## Product datasheet for **TA345180**

### Pparg Rabbit Polyclonal Antibody

#### Product data:

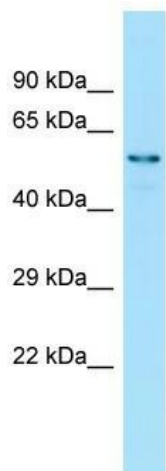
Product Type:	Primary Antibodies
Applications:	WB
Recommended Dilution:	WB
Reactivity:	Rat
Host:	Rabbit
Isotype:	IgG
Clonality:	Polyclonal
Immunogen:	The immunogen for Anti-Pparg antibody is: synthetic peptide directed towards the C-terminal region of Rat Pparg. Synthetic peptide located within the following region: HPESSQLFAKVLQKMTDLRQIVTEHVQLLHVIKKTETDMSLHPLLQEIYK
Formulation:	Liquid. Purified antibody supplied in 1x PBS buffer with 0.09% (w/v) sodium azide and 2% sucrose. <i>Note that this product is shipped as lyophilized powder to China customers.</i>
Purification:	Affinity Purified
Conjugation:	Unconjugated
Storage:	Store at -20°C as received.
Stability:	Stable for 12 months from date of receipt.
Predicted Protein Size:	52 kDa
Gene Name:	peroxisome proliferator-activated receptor gamma
Database Link:	<a href="#">NP_001138838</a> <a href="#">Entrez Gene 25664 Rat</a> <a href="#">O88275</a>
Background:	Pparg is a ligand-activated transcription factor; It mediates expression of genes involved in lipid metabolism.
Synonyms:	CIMT1; GLM1; NR1C3; OTTHUMP00000185030; OTTHUMP00000185033; PPAR-gamma; PPARG1; PPARG2; PPARgamma



[View online »](#)

**Note:** Immunogen Sequence Homology: Dog: 100%; Pig: 100%; Rat: 100%; Goat: 100%; Horse: 100%; Human: 100%; Mouse: 100%; Sheep: 100%; Bovine: 100%; Rabbit: 100%; Guinea pig: 100%; Zebrafish: 86%

### Product images:



Host: Rabbit; Target Name: Pparg; Sample Tissue: Rat Kidney lysates; Antibody Dilution: 1.0 ug/ml