

Product datasheet for **TA345173**

ZNF451 Rabbit Polyclonal Antibody

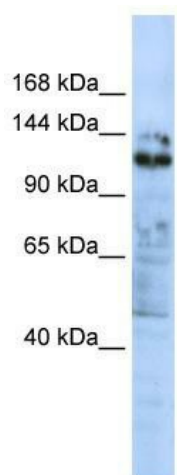
Product data:

Product Type:	Primary Antibodies
Applications:	WB
Recommended Dilution:	WB
Reactivity:	Human
Host:	Rabbit
Isotype:	IgG
Clonality:	Polyclonal
Immunogen:	The immunogen for anti-ZNF451 antibody: synthetic peptide directed towards the C terminal of human ZNF451. Synthetic peptide located within the following region: LLNSISDTTKECDSDDNMGAKNTSIGEEFISTEDVELEEAIRRSLEEM
Formulation:	Liquid. Purified antibody supplied in 1x PBS buffer with 0.09% (w/v) sodium azide and 2% sucrose.
Purification:	Affinity Purified
Conjugation:	Unconjugated
Storage:	Store at -20°C as received.
Stability:	Stable for 12 months from date of receipt.
Predicted Protein Size:	116 kDa
Gene Name:	zinc finger protein 451
Database Link:	NP_056370 Entrez Gene 26036 Human Q9Y4E5
Background:	ZNF451 belongs to the krueppel C2H2-type zinc-finger protein family and may be involved in transcriptional regulation.
Synonyms:	COASTER; dj41711.1
Note:	Immunogen Sequence Homology: Dog: 100%; Pig: 100%; Rat: 100%; Horse: 100%; Human: 100%; Mouse: 100%; Bovine: 93%; Rabbit: 87%
Protein Families:	Transcription Factors



[View online »](#)

Product images:



WB Suggested Anti-ZNF451 Antibody Titration:
0.2-1 ug/ml; ELISA Titer: 1: 1562500; Positive
Control: MCF7 cell lysate