

## Product datasheet for **TA345172**

### HINFP Rabbit Polyclonal Antibody

#### Product data:

Product Type:	Primary Antibodies
Applications:	WB
Recommended Dilution:	WB
Reactivity:	Human
Host:	Rabbit
Isotype:	IgG
Clonality:	Polyclonal
Immunogen:	The immunogen for anti-MIZF antibody: synthetic peptide directed towards the middle region of human MIZF. Synthetic peptide located within the following region: NQTNAQGQQEIVYYVLSEAPGEPPEPPSGGIMEKLQGIAEEPEIQMV
Formulation:	Liquid. Purified antibody supplied in 1x PBS buffer with 0.09% (w/v) sodium azide and 2% sucrose.
Purification:	Affinity Purified
Conjugation:	Unconjugated
Storage:	Store at -20°C as received.
Stability:	Stable for 12 months from date of receipt.
Predicted Protein Size:	60 kDa
Gene Name:	histone H4 transcription factor
Database Link:	<a href="#">NP_056332</a> <a href="#">Entrez Gene 25988 Human</a> <a href="#">Q9BQA5</a>



[View online »](#)

**Background:**

This protein interacts with methyl-CpG-binding protein-2 (MBD2; MIM 603547), a component of the MeCP1 histone deacetylase (HDAC) complex, and plays a role in DNA methylation and transcription repression. MIZF interacts with methyl-CpG-binding protein-2 (MBD2; MIM 603547), a component of the MeCP1 histone deacetylase (HDAC) complex, and plays a role in DNA methylation and transcription repression. [supplied by OMIM]. PRIMARYREFSEQ\_SPAN PRIMARY\_IDENTIFIER PRIMARY\_SPAN COMP 1-62 BF726036.1 1-62 63-91 BG821695.1 33-61 92-1666 BC001073.2 1-1575 1667-2175 AK056362.1 1518-2026 2176-2319 BC001073.2 2085-2228

**Synonyms:**

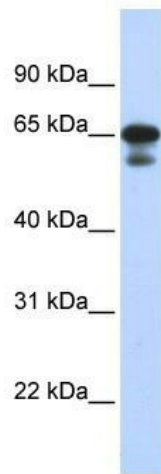
HiNF-P; MIZF; ZNF743

**Note:**

Immunogen Sequence Homology: Human: 100%; Dog: 93%; Pig: 93%; Rat: 93%; Guinea pig: 93%; Horse: 86%; Rabbit: 86%; Bovine: 79%

**Protein Families:**

Transcription Factors

**Product images:**

WB Suggested Anti-MIZF Antibody Titration: 0.2-1 ug/ml; ELISA Titer: 1: 312500; Positive Control: Transfected 293T