

## Product datasheet for **TA345169**

### Arg 3.1 (ARC) Rabbit Polyclonal Antibody

#### Product data:

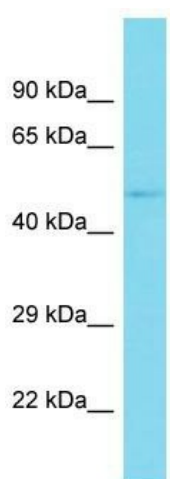
Product Type:	Primary Antibodies
Applications:	WB
Recommended Dilution:	WB
Reactivity:	Human
Host:	Rabbit
Isotype:	IgG
Clonality:	Polyclonal
Immunogen:	The immunogen for Anti-ARC antibody is: synthetic peptide directed towards the C-terminal region of Human ARC. Synthetic peptide located within the following region: RHPLPKTLEQLIQRGMEVQDDLEQAAEPAGPHLPVEDEAETLTPAPNSE
Formulation:	Liquid. Purified antibody supplied in 1x PBS buffer with 0.09% (w/v) sodium azide and 2% sucrose. <i>Note that this product is shipped as lyophilized powder to China customers.</i>
Purification:	Affinity Purified
Conjugation:	Unconjugated
Storage:	Store at -20°C as received.
Stability:	Stable for 12 months from date of receipt.
Predicted Protein Size:	43 kDa
Gene Name:	activity-regulated cytoskeleton-associated protein
Database Link:	<a href="#">NP_056008</a> <a href="#">Entrez Gene 23237 Human</a> <a href="#">Q7LC44</a>
Background:	ARC is required for consolidation of synaptic plasticity as well as formation of long-term memory. It regulates endocytosis of AMPA receptors in response to synaptic activity. It is required for homeostatic synaptic scaling of AMPA receptors. ARC plays a role in the regulation of cell morphology and cytoskeletal organization and is required in the stress fiber dynamics and cell migration.
Synonyms:	Arg3.1



[View online »](#)

Note: Immunogen Sequence Homology: Human: 100%; Pig: 86%; Guinea pig: 86%

### Product images:



Host: Rabbit  
Target Name: ARC  
Sample Tissue: Ovary Tumor Lysate  
Antibody Dilution: 1.0 $\mu$ g/ml

Host: Rabbit; Target Name: ARC; Sample Tissue:  
Ovary Tumor lysates; Antibody Dilution: 1.0 ug/ml