

Product datasheet for **TA345168**

Arg 3.1 (ARC) Rabbit Polyclonal Antibody

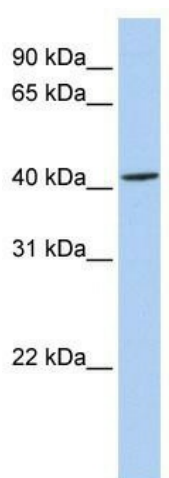
Product data:

Product Type:	Primary Antibodies
Applications:	WB
Recommended Dilution:	WB
Reactivity:	Human
Host:	Rabbit
Isotype:	IgG
Clonality:	Polyclonal
Immunogen:	The immunogen for anti-ARC antibody: synthetic peptide directed towards the N terminal of human ARC. Synthetic peptide located within the following region: ELDHRTSGGLHAYPGPRGGQVAKPNVILQIGKCRAEMLEHVRRTHRHLLA
Formulation:	Liquid. Purified antibody supplied in 1x PBS buffer with 0.09% (w/v) sodium azide and 2% sucrose. <i>Note that this product is shipped as lyophilized powder to China customers.</i>
Purification:	Affinity Purified
Conjugation:	Unconjugated
Storage:	Store at -20°C as received.
Stability:	Stable for 12 months from date of receipt.
Predicted Protein Size:	45 kDa
Gene Name:	activity-regulated cytoskeleton-associated protein
Database Link:	NP_056008 Entrez Gene 23237 Human Q7LC44
Background:	ARC is required for consolidation of synaptic plasticity as well as formation of long-term memory. It regulates endocytosis of AMPA receptors in response to synaptic activity. The protein is also required for homeostatic synaptic scaling of AMPA receptors.
Synonyms:	Arg3.1
Note:	Immunogen Sequence Homology: Pig: 100%; Rat: 100%; Goat: 100%; Human: 100%; Mouse: 100%; Bovine: 100%; Guinea pig: 100%



[View online »](#)

Product images:



WB Suggested Anti-ARC Antibody Titration: 0.2-1 ug/ml; ELISA Titer: 1: 1562500; Positive Control: Hela cell lysate