

Product datasheet for **TA345166**

MFAP1 Rabbit Polyclonal Antibody

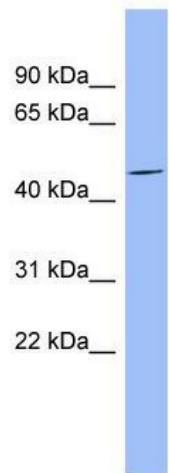
Product data:

Product Type:	Primary Antibodies
Applications:	WB
Recommended Dilution:	WB
Reactivity:	Human
Host:	Rabbit
Isotype:	IgG
Clonality:	Polyclonal
Immunogen:	The immunogen for anti-MFAP1 antibody: synthetic peptide directed towards the middle region of human MFAP1. Synthetic peptide located within the following region: TKYTHLVDQDTTSFDSA WQGESAQNTKFFKQKAAGVRDVFERPSAKKRKT
Formulation:	Liquid. Purified antibody supplied in 1x PBS buffer with 0.09% (w/v) sodium azide and 2% sucrose. <i>Note that this product is shipped as lyophilized powder to China customers.</i>
Purification:	Affinity Purified
Conjugation:	Unconjugated
Storage:	Store at -20°C as received.
Stability:	Stable for 12 months from date of receipt.
Predicted Protein Size:	52 kDa
Gene Name:	microfibrillar associated protein 1
Database Link:	NP_005917 Entrez Gene 4236 Human P55081
Background:	Component of the elastin-associated microfibrils.
Synonyms:	microfibrillar-associated protein 1
Note:	Immunogen Sequence Homology: Dog: 100%; Pig: 100%; Rat: 100%; Horse: 100%; Human: 100%; Mouse: 100%; Bovine: 100%; Rabbit: 100%; Guinea pig: 100%
Protein Families:	Secreted Protein



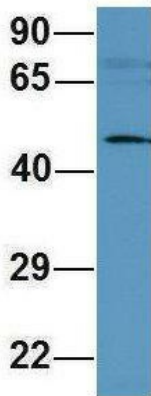
[View online »](#)

Product images:



WB Suggested Anti-MFAP1 Antibody Titration:
0.2-1 ug/ml; ELISA Titer: 1:312500; Positive
Control: Human brain

MFAP1



Rabbit Anti-MFAP1
Sample Type: Human 721_B
Antibody Concentration: 1ug/mL

Host: Rabbit; Target Name: MFAP1; Sample
Tissue: 721_B; Antibody Dilution: 1.0 ug/ml;
MFAP1 is supported by BioGPS gene expression
data to be expressed in 721_B