

## Product datasheet for **TA345165**

### Brk (PTK6) Rabbit Polyclonal Antibody

#### Product data:

|                         |   |
|-------------------------|---|
| Product Type:           | Primary Antibodies  |
| Applications:           | WB  |
| Recommended Dilution:   | WB  |
| Reactivity:             | Human   |
| Host:                   | Rabbit  |
| Isotype:                | IgG   |
| Clonality:              | Polyclonal  |
| Immunogen:              | The immunogen for anti-PTK6 antibody: synthetic peptide directed towards the middle region of human PTK6. Synthetic peptide located within the following region:<br>SELLDIAWQVAEGMCYLESQNYIHRDLAARNILVGENTLCKVGFGLARL |
| Formulation:            | Liquid. Purified antibody supplied in 1x PBS buffer with 0.09% (w/v) sodium azide and 2% sucrose.<br><i>Note that this product is shipped as lyophilized powder to China customers.</i>                               |
| Purification:           | Affinity Purified   |
| Conjugation:            | Unconjugated  |
| Storage:                | Store at -20°C as received.   |
| Stability:              | Stable for 12 months from date of receipt.  |
| Predicted Protein Size: | 52 kDa  |
| Gene Name:              | protein tyrosine kinase 6   |
| Database Link:          | <a href="#">NP_005966</a><br><a href="#">Entrez Gene 5753 Human</a><br><a href="#">Q13882</a>   |



[View online »](#)

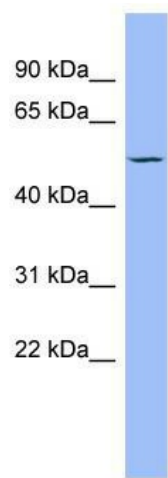
**Background:** The protein encoded by this gene is a cytoplasmic nonreceptor protein kinase which may function as an intracellular signal transducer in epithelial tissues. Overexpression of this gene in mammary epithelial cells leads to sensitization of the cells to epidermal growth factor and results in a partially transformed phenotype. Expression of this gene has been detected at low levels in some breast tumors but not in normal breast tissue. The encoded protein has been shown to undergo autophosphorylation. Alternative splicing results in multiple transcript variants. [provided by RefSeq, Jan 2012]

**Synonyms:** BRK

**Note:** Immunogen Sequence Homology: Human: 100%; Horse: 85%

**Protein Families:** Druggable Genome, Protein Kinase, Secreted Protein

### Product images:



WB Suggested Anti-PTK6 Antibody Titration: 0.2-1 ug/ml; ELISA Titer: 1:1562500; Positive Control: HepG2 cell lysate