

Product datasheet for **TA345164**

Septin 2 (SEPT2) Rabbit Polyclonal Antibody

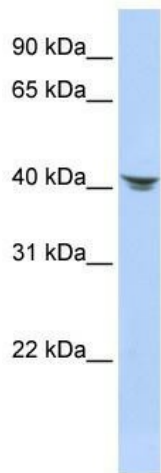
Product data:

Product Type:	Primary Antibodies
Applications:	WB
Recommended Dilution:	WB
Reactivity:	Human, Monkey, Mouse
Host:	Rabbit
Isotype:	IgG
Clonality:	Polyclonal
Immunogen:	The immunogen for anti-SEPT2 antibody: synthetic peptide directed towards the N terminal of human SEPT2. Synthetic peptide located within the following region: MSKQQPTQFINPETPGYVGFANLPNQVHRKSVKKGFEFTLMVVGESGLGK
Formulation:	Liquid. Purified antibody supplied in 1x PBS buffer with 0.09% (w/v) sodium azide and 2% sucrose. <i>Note that this product is shipped as lyophilized powder to China customers.</i>
Purification:	Affinity Purified
Conjugation:	Unconjugated
Storage:	Store at -20°C as received.
Stability:	Stable for 12 months from date of receipt.
Predicted Protein Size:	41 kDa
Gene Name:	septin 2
Database Link:	NP_006146 Entrez Gene 18000 Mouse Entrez Gene 4735 Human Q15019
Background:	SEPT2 is required for normal progress through mitosis. SEPT2 is involved in cytokinesis.
Synonyms:	DIFF6; hNedd5; NEDD-5; NEDD5; Pnutl3
Note:	Immunogen Sequence Homology: Dog: 100%; Pig: 100%; Rat: 100%; Human: 100%; Mouse: 100%; Rabbit: 100%; Horse: 93%; Bovine: 93%; Guinea pig: 93%; Zebrafish: 90%

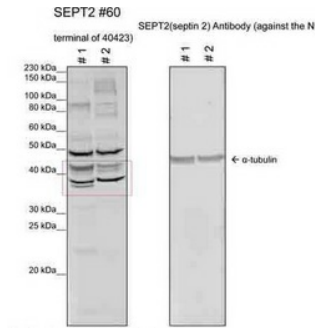


[View online »](#)

Product images:



WB Suggested Anti-SEPT2 Antibody Titration: 0.2-1 ug/ml; ELISA Titer: 1:312500; Positive Control: HepG2 cell lysate. SEPT2 is strongly supported by BioGPS gene expression data to be expressed in HepG2

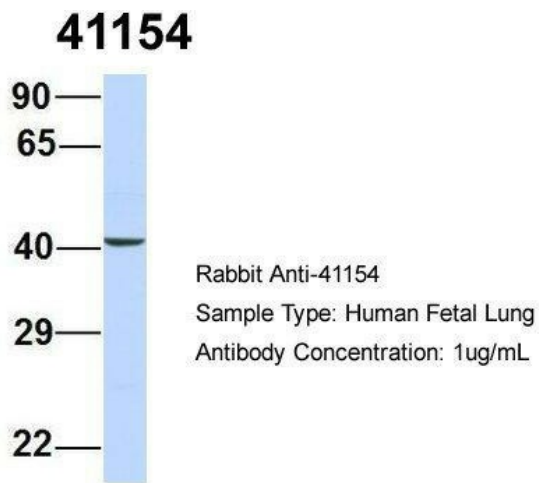


SEPT2 #60
SEPT2(sepin 2) Antibody (against the N terminal of 40423)

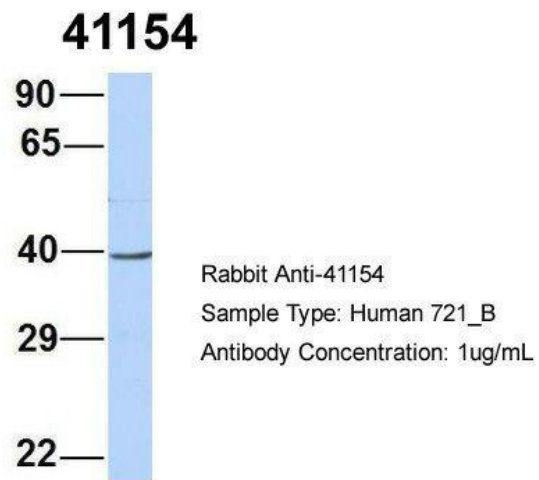
Antibody : SEPT2-60 (1:1000)
1 – HeLa Cell Lysate
2 – Vera Cell Lysate
* Each loaded with 15 ug of protein per well.
Predicted M.W. = 41 kDa

Conclusion :
Western Blot of SEPT2#60 does have bands in both human and monkey origin though they are not expressed very well. Furthermore, other bands are seen corresponding to other proteins in the lysate.

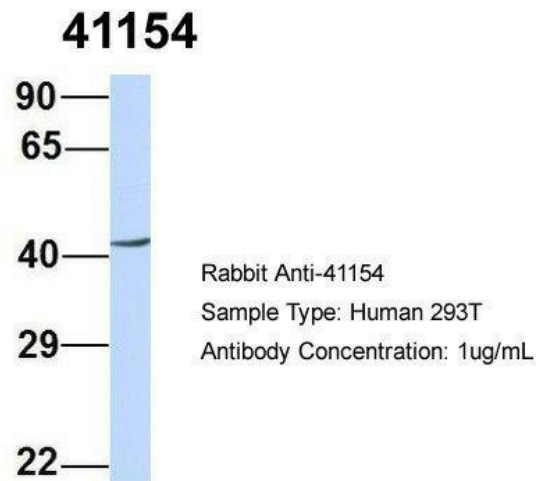
Sample Type:?. Human Cervical Cancer Cell Lysate (15ug); 2. Monkey Fibroblast Cell Lysate (15ug); Primary Dilution:?:1000; Secondary Antibody: goat anti-Rabbit; Secondary Dilution:?:40,000;



Host: Rabbit; Target Name: 41154; Sample Tissue: Human Fetal Lung; Antibody Dilution: 1.0 ug/ml



Host: Rabbit; Target Name: 41154; Sample Tissue: Human 721_B; Antibody Dilution: 1.0 ug/ml; SEPT2 is strongly supported by BioGPS gene expression data to be expressed in Human 721_B cells



Host: Rabbit; Target Name: 41154; Sample Tissue: Human 293T; Antibody Dilution: 1.0 ug/ml; SEPT2 is supported by BioGPS gene expression data to be expressed in HEK293T