

## Product datasheet for **TA345163**

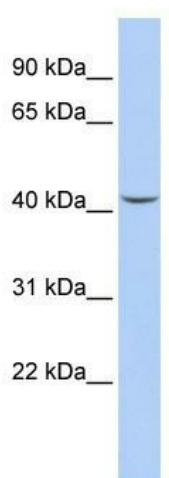
### Septin 2 (SEPT2) Rabbit Polyclonal Antibody

#### Product data:

Product Type:	Primary Antibodies
Applications:	WB
Recommended Dilution:	WB
Reactivity:	Human
Host:	Rabbit
Isotype:	IgG
Clonality:	Polyclonal
Immunogen:	The immunogen for anti-SEPT2 antibody: synthetic peptide directed towards the middle region of human SEPT2. Synthetic peptide located within the following region: LQEVTQDLHYENFRSERLKRGGKVENEDMNKDQILLEKEAELRRMQEMI
Formulation:	Liquid. Purified antibody supplied in 1x PBS buffer with 0.09% (w/v) sodium azide and 2% sucrose. <i>Note that this product is shipped as lyophilized powder to China customers.</i>
Purification:	Affinity Purified
Conjugation:	Unconjugated
Storage:	Store at -20°C as received.
Stability:	Stable for 12 months from date of receipt.
Predicted Protein Size:	41 kDa
Gene Name:	septin 2
Database Link:	<a href="#">NP_006146</a> <a href="#">Entrez Gene 4735 Human</a> <a href="#">Q15019</a>
Background:	SEPT2 is required for normal progress through mitosis. SEPT2 is involved in cytokinesis.
Synonyms:	DIFF6; hNedd5; NEDD-5; NEDD5; Pnut13
Note:	Immunogen Sequence Homology: Dog: 100%; Pig: 100%; Rat: 100%; Horse: 100%; Human: 100%; Mouse: 100%; Bovine: 100%; Rabbit: 100%; Zebrafish: 100%; Guinea pig: 100%



[View online »](#)

**Product images:**

WB Suggested Anti-SEPT2 Antibody Titration: 0.2-1 ug/ml; ELISA Titer: 1:312500; Positive Control: HepG2 cell lysate. SEPT2 is strongly supported by BioGPS gene expression data to be expressed in Human HepG2 cells