

Product datasheet for **TA345162**

Neurotrophin 4 (NTF4) Rabbit Polyclonal Antibody

Product data:

Product Type:	Primary Antibodies
Applications:	WB
Recommended Dilution:	WB
Reactivity:	Human
Host:	Rabbit
Isotype:	IgG
Clonality:	Polyclonal
Immunogen:	The immunogen for anti-NTF5 antibody: synthetic peptide directed towards the N terminal of human NTF5. Synthetic peptide located within the following region: LAPEWDLSPRVLSRGAPAGPPLLFLLEAGAFRESAGAPANRSRRGVSE
Formulation:	Liquid. Purified antibody supplied in 1x PBS buffer with 0.09% (w/v) sodium azide and 2% sucrose. <i>Note that this product is shipped as lyophilized powder to China customers.</i>
Purification:	Affinity Purified
Conjugation:	Unconjugated
Storage:	Store at -20°C as received.
Stability:	Stable for 12 months from date of receipt.
Predicted Protein Size:	22 kDa
Gene Name:	neurotrophin 4
Database Link:	NP_006170 Entrez Gene 4909 Human P34130

Background: This gene is a member of a family of neurotrophic factors, neurotrophins, that control survival and differentiation of mammalian neurons. The expression of this gene is ubiquitous and less influenced by environmental signals. While knock-outs of other neurotrophins including nerve growth factor, brain-derived neurotrophic factor, and neurotrophin 3 prove lethal during early postnatal development, NTF5-deficient mice only show minor cellular deficits and develop normally to adulthood. [provided by RefSeq, Jul 2008]



[View online »](#)

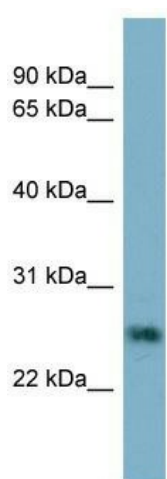
Synonyms: 5; GLC10; GLC10; NT-4; NT-5; NT4; NT5; NTF5

Note: Immunogen Sequence Homology: Dog: 100%; Pig: 100%; Horse: 100%; Human: 100%; Mouse: 100%; Guinea pig: 100%; Rat: 93%; Bovine: 86%; Rabbit: 86%

Protein Families: Druggable Genome, Secreted Protein

Protein Pathways: MAPK signaling pathway, Neurotrophin signaling pathway

Product images:



WB Suggested Anti-NTF5 Antibody Titration: 0.2-1 ug/ml; ELISA Titer: 1:1562500; Positive Control: HT1080 cell lysate