

Product datasheet for **TA345160**

ORC2 Rabbit Polyclonal Antibody

Product data:

Product Type:	Primary Antibodies
Applications:	WB
Recommended Dilution:	WB
Reactivity:	Mouse
Host:	Rabbit
Isotype:	IgG
Clonality:	Polyclonal
Immunogen:	The immunogen for Anti-Orc2 antibody is: synthetic peptide directed towards the C-terminal region of Mouse Orc2. Synthetic peptide located within the following region: LMWDHAKQSLYNWLWYETTTYSPTYEETSyenSLLVKQSGSLPLSLIHV
Formulation:	Liquid. Purified antibody supplied in 1x PBS buffer with 0.09% (w/v) sodium azide and 2% sucrose. <i>Note that this product is shipped as lyophilized powder to China customers.</i>
Purification:	Affinity Purified
Conjugation:	Unconjugated
Storage:	Store at -20°C as received.
Stability:	Stable for 12 months from date of receipt.
Predicted Protein Size:	58 kDa
Gene Name:	origin recognition complex subunit 2
Database Link:	NP_006181 Entrez Gene 18393 Mouse Q13416
Background:	Component of the origin recognition complex (ORC) that binds origins of replication. DNA-binding is ATP-dependent. The specific DNA sequences that define origins of replication have not been identified yet. ORC is required to assemble the pre-replication complex necessary to initiate DNA replication (By similarity). Binds histone H3 and H4 trimethylation marks H3K9me3, H3K20me3 and H4K27me3. Stabilizes LRWD1, by protecting it from ubiquitin-mediated proteasomal degradation. Also stabilizes ORC3.



[View online »](#)

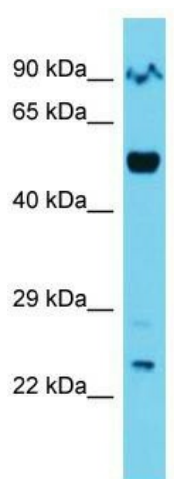
Synonyms: ORC2L

Note: Immunogen Sequence Homology: Dog: 100%; Pig: 100%; Rat: 100%; Horse: 100%; Human: 100%; Mouse: 100%; Rabbit: 100%; Guinea pig: 100%; Bovine: 93%; Zebrafish: 86%

Protein Families: Stem cell - Pluripotency, Transcription Factors

Protein Pathways: Cell cycle

Product images:



Host: Rabbit; Target Name: Orc2; Sample Tissue: Mouse Lung lysates; Antibody Dilution: 1.0 ug/ml