

Product datasheet for **TA345159**

PDE4D Rabbit Polyclonal Antibody

Product data:

Product Type:	Primary Antibodies
Applications:	WB
Recommended Dilution:	WB
Reactivity:	Mouse
Host:	Rabbit
Isotype:	IgG
Clonality:	Polyclonal
Immunogen:	The immunogen for anti-Pde4d antibody: synthetic peptide corresponding to a region of Mouse. Synthetic peptide located within the following region: PFAQVLASLRTVRNNFAALTNLQDRAPSKRSPMCNQPSINKATITEEAYQ
Formulation:	Liquid. Purified antibody supplied in 1x PBS buffer with 0.09% (w/v) sodium azide and 2% sucrose. <i>Note that this product is shipped as lyophilized powder to China customers.</i>
Purification:	Affinity Purified
Conjugation:	Unconjugated
Storage:	Store at -20°C as received.
Stability:	Stable for 12 months from date of receipt.
Predicted Protein Size:	84 kDa
Gene Name:	phosphodiesterase 4D
Database Link:	NP_006194 Entrez Gene 238871 Mouse Q08499
Background:	Hydrolyzes the second messenger cAMP, which is a key regulator of many important physiological processes.
Synonyms:	ACRDYS2; DPDE3; HSPDE4D; PDE4DN2; PDE43; STRK1
Note:	Immunogen Sequence Homology: Dog: 100%; Pig: 100%; Rat: 100%; Horse: 100%; Human: 100%; Mouse: 100%; Bovine: 100%; Rabbit: 93%

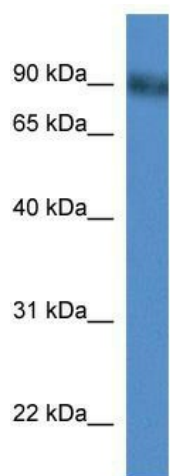


[View online »](#)

Protein Families: Druggable Genome

Protein Pathways: Progesterone-mediated oocyte maturation, Purine metabolism

Product images:



WB Suggested Anti-Pde4d Antibody Titration: 0.2-1 ug/ml; ELISA Titer: 1:1562500; Positive Control: Mouse Brain