

## Product datasheet for **TA345157**

### Enkephalin (PENK) Rabbit Polyclonal Antibody

#### Product data:

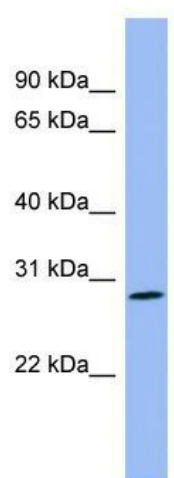
Product Type:	Primary Antibodies
Applications:	WB
Recommended Dilution:	WB
Reactivity:	Human
Host:	Rabbit
Isotype:	IgG
Clonality:	Polyclonal
Immunogen:	The immunogen for anti-PENK antibody: synthetic peptide directed towards the middle region of human PENK. Synthetic peptide located within the following region: DAEEDDSLANSDDLKELLETDGDNRRERSHHQDGSNDNEEEVSKRYGGFMRG
Formulation:	Liquid. Purified antibody supplied in 1x PBS buffer with 0.09% (w/v) sodium azide and 2% sucrose. <i>Note that this product is shipped as lyophilized powder to China customers.</i>
Purification:	Affinity Purified
Conjugation:	Unconjugated
Storage:	Store at -20°C as received.
Stability:	Stable for 12 months from date of receipt.
Predicted Protein Size:	31 kDa
Gene Name:	proenkephalin
Database Link:	<a href="#">NP_006202</a> <a href="#">Entrez Gene 5179 Human</a> <a href="#">P01210</a>
Background:	Met- and Leu-enkephalins compete with and mimic the effects of opiate drugs. They play a role in a number of physiologic functions, including pain perception and responses to stress. PENK(114-133) and PENK(237-258) increase glutamate release in the striatum. PENK(114-133) decreases GABA concentration in the striatum.
Synonyms:	enkephalin A; preproenkephalin; proenkephalin
Note:	Immunogen Sequence Homology: Human: 100%



[View online »](#)

Protein Families: Secreted Protein

### Product images:



WB Suggested Anti-PENK Antibody Titration: 0.2-1 ug/ml; ELISA Titer: 1:1562500; Positive Control: Jurkat cell lysate