

Product datasheet for **TA345155**

PFKFB2 Rabbit Polyclonal Antibody

Product data:

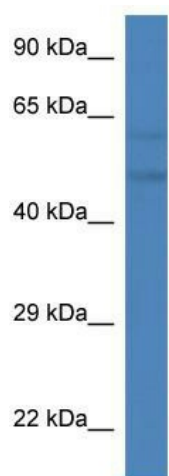
Product Type:	Primary Antibodies
Applications:	WB
Recommended Dilution:	WB
Reactivity:	Mouse
Host:	Rabbit
Isotype:	IgG
Clonality:	Polyclonal
Immunogen:	The immunogen for anti-Pfkfb2 antibody: synthetic peptide corresponding to a region of Mouse. Synthetic peptide located within the following region: RNSFTPLSSNTIRRPRNYSVGSRPLKPLSPLRALDMQEGADQPKTQVSI
Formulation:	Liquid. Purified antibody supplied in 1x PBS buffer with 0.09% (w/v) sodium azide and 2% sucrose. <i>Note that this product is shipped as lyophilized powder to China customers.</i>
Purification:	Affinity Purified
Conjugation:	Unconjugated
Storage:	Store at -20°C as received.
Stability:	Stable for 12 months from date of receipt.
Predicted Protein Size:	57 kDa
Gene Name:	6-phosphofructo-2-kinase/fructose-2,6-biphosphatase 2
Database Link:	NP_006203 Entrez Gene 18640 Mouse O60825
Background:	Synthesis and degradation of fructose 2,6-bisphosphate.
Synonyms:	FBPase-2; PFK-2
Note:	Immunogen Sequence Homology: Dog: 100%; Pig: 100%; Rat: 100%; Horse: 100%; Human: 100%; Mouse: 100%; Rabbit: 100%; Guinea pig: 100%; Bovine: 93%
Protein Families:	Druggable Genome



[View online »](#)

Protein Pathways: Fructose and mannose metabolism

Product images:



WB Suggested Anti-Pfkfb2 Antibody; Titration: 1.0 ug/ml; Positive Control: Mouse Liver