

Product datasheet for **TA345154**

PHKG1 Rabbit Polyclonal Antibody

Product data:

Product Type:	Primary Antibodies
Applications:	WB
Recommended Dilution:	WB
Reactivity:	Rat
Host:	Rabbit
Isotype:	IgG
Clonality:	Polyclonal
Immunogen:	The immunogen for Anti-Phkg1 antibody is: synthetic peptide directed towards the N-terminal region of Rat Phkg1. Synthetic peptide located within the following region: NFYENYEPKEILGRGVSSVVRRCIHKPTCQEYAVKIIDITGGGSFSSEEV
Formulation:	Liquid. Purified antibody supplied in 1x PBS buffer with 0.09% (w/v) sodium azide and 2% sucrose. <i>Note that this product is shipped as lyophilized powder to China customers.</i>
Purification:	Affinity Purified
Conjugation:	Unconjugated
Storage:	Store at -20°C as received.
Stability:	Stable for 12 months from date of receipt.
Predicted Protein Size:	42 kDa
Gene Name:	phosphorylase kinase catalytic subunit gamma 1
Database Link:	NP_006204 Entrez Gene 29353 Rat Q16816
Background:	catalytic subunit of phosphorylase kinase complex; plays a role in glycogen metabolism [RGD, Feb 2006]. ##Evidence-Data-START## Transcript exon combination :: X07320.1 [ECO:0000332] RNAseq introns :: single sample supports all introns SRS369727, SRS369733 [ECO:0000348] ##Evidence-Data-END##
Synonyms:	PHKG



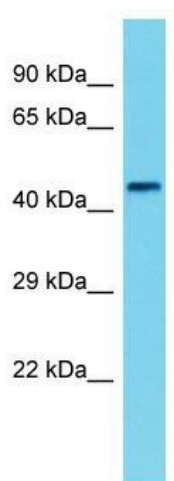
[View online »](#)

Note: Immunogen Sequence Homology: Dog: 100%; Pig: 100%; Rat: 100%; Horse: 100%; Human: 100%; Mouse: 100%; Bovine: 100%; Rabbit: 100%; Guinea pig: 100%; Zebrafish: 92%

Protein Families: Druggable Genome, Protein Kinase

Protein Pathways: Calcium signaling pathway, Insulin signaling pathway

Product images:



Host: Rabbit; Target Name: Phkg1; Sample Tissue: Rat Small Intestine lysates; Antibody Dilution: 1.0 ug/ml