

Product datasheet for **TA345151**

PHYH Rabbit Polyclonal Antibody

Product data:

Product Type:	Primary Antibodies
Applications:	WB
Recommended Dilution:	WB
Reactivity:	Human
Host:	Rabbit
Isotype:	IgG
Clonality:	Polyclonal
Immunogen:	The immunogen for anti-PHYH antibody: synthetic peptide directed towards the middle region of human PHYH. Synthetic peptide located within the following region: EKGDTVFFHPLLIHGSGQNKTQGFRKAISCHFASADCHYIDVKGTSQENI
Formulation:	Liquid. Purified antibody supplied in 1x PBS buffer with 0.09% (w/v) sodium azide and 2% sucrose. <i>Note that this product is shipped as lyophilized powder to China customers.</i>
Purification:	Affinity Purified
Conjugation:	Unconjugated
Storage:	Store at -20°C as received.
Stability:	Stable for 12 months from date of receipt.
Predicted Protein Size:	39 kDa
Gene Name:	phytanoyl-CoA 2-hydroxylase
Database Link:	NP_006205 Entrez Gene 5264 Human O14832
Background:	This gene is a member of the PhyH family and encodes a peroxisomal protein that is involved in the alpha-oxidation of 3-methyl branched fatty acids. Specifically, this protein converts phytanoyl-CoA to 2-hydroxyphytanoyl-CoA. Mutations in this gene have been associated with Refsum disease (RD) and deficient protein activity has been associated with Zellweger syndrome and rhizomelic chondrodysplasia punctata. Alternate transcriptional splice variants, encoding different isoforms, have been characterized. [provided by RefSeq, Jul 2008]



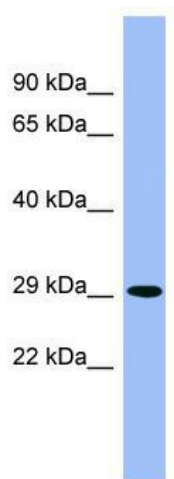
[View online »](#)

Synonyms: LN1; LNAP1; PAHX; PHYH1; RD

Note: Immunogen Sequence Homology: Human: 100%; Rat: 93%; Horse: 93%; Mouse: 93%; Dog: 86%; Pig: 86%; Bovine: 86%; Rabbit: 86%; Guinea pig: 86%; Zebrafish: 79%

Protein Families: Druggable Genome

Product images:



WB Suggested Anti-PHYH Antibody Titration: 0.2-1 ug/ml; ELISA Titer: 1:312500; Positive Control: Human brain