

Product datasheet for **TA345150**

SERPINE2 Rabbit Polyclonal Antibody

Product data:

Product Type:	Primary Antibodies
Applications:	WB
Recommended Dilution:	WB
Reactivity:	Human
Host:	Rabbit
Isotype:	IgG
Clonality:	Polyclonal
Immunogen:	The immunogen for anti-SERPINE2 antibody: synthetic peptide directed towards the middle region of human SERPINE2. Synthetic peptide located within the following region: ISMLIALPTESSTPLSAIIPHISTKTIDSWMSIMVPKRVQVILPKFTAVA
Formulation:	Liquid. Purified antibody supplied in 1x PBS buffer with 0.09% (w/v) sodium azide and 2% sucrose. <i>Note that this product is shipped as lyophilized powder to China customers.</i>
Purification:	Affinity Purified
Conjugation:	Unconjugated
Storage:	Store at -20°C as received.
Stability:	Stable for 12 months from date of receipt.
Predicted Protein Size:	44 kDa
Gene Name:	serpin family E member 2
Database Link:	NP_006207 Entrez Gene 5270 Human P07093
Background:	This gene encodes a member of the serpin family of proteins, a group of proteins that inhibit serine proteases. Thrombin, urokinase, plasmin and trypsin are among the proteases that this family member can inhibit. This gene is a susceptibility gene for chronic obstructive pulmonary disease and for emphysema. Alternative splicing results in multiple transcript variants. [provided by RefSeq, Aug 2012]
Synonyms:	GDN; GDNPF; PI-7; PI7; PN-1; PN1; PNI

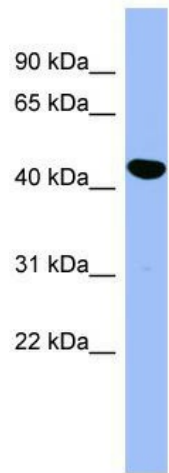


[View online »](#)

Note: Immunogen Sequence Homology: Pig: 100%; Rat: 100%; Horse: 100%; Human: 100%; Mouse: 100%; Rabbit: 100%; Dog: 93%; Guinea pig: 93%; Goat: 86%; Bovine: 86%; Zebrafish: 79%

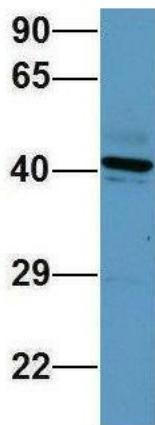
Protein Families: Druggable Genome, Secreted Protein

Product images:



WB Suggested Anti-SERPINE2 Antibody Titration: 0.2-1 ug/ml; ELISA Titer: 1:312500; Positive Control: HepG2 cell lysate

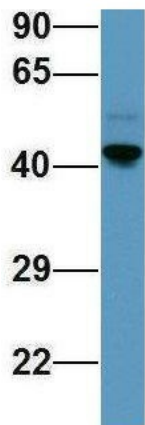
SERPINE2



Rabbit Anti-SERPINE2
 Sample Type: Human Adult Placenta
 Antibody Concentration: 1ug/mL

Host: Rabbit; Target Name: SERPINE2; Sample Tissue: Human Adult Placenta; Antibody Dilution: 1.0 ug/ml

SERPINE2



Rabbit Anti-SERPINE2
Sample Type: Human Fetal Liver
Antibody Concentration: 1ug/mL

Host: Rabbit; Target Name: SERPINE2; Sample
Tissue: Human Fetal Liver; Antibody Dilution: 1.0
ug/ml