

Product datasheet for **TA345149**

SERPINI2 Rabbit Polyclonal Antibody

Product data:

Product Type:	Primary Antibodies
Applications:	WB
Recommended Dilution:	WB
Reactivity:	Human
Host:	Rabbit
Isotype:	IgG
Clonality:	Polyclonal
Immunogen:	The immunogen for anti-SERPINI2 antibody: synthetic peptide directed towards the middle region of human SERPINI2. Synthetic peptide located within the following region: LPRFKVEQKVDKFDVLYSLNITEIFSGGCDLSGITDSSEVYVSQVTQKVF
Formulation:	Liquid. Purified antibody supplied in 1x PBS buffer with 0.09% (w/v) sodium azide and 2% sucrose. <i>Note that this product is shipped as lyophilized powder to China customers.</i>
Purification:	Affinity Purified
Conjugation:	Unconjugated
Storage:	Store at -20°C as received.
Stability:	Stable for 12 months from date of receipt.
Predicted Protein Size:	46 kDa
Gene Name:	serpin family I member 2
Database Link:	NP_006208 Entrez Gene 5276 Human O75830
Background:	The gene encodes a member of a family of proteins that acts as inhibitors of serine proteases. These proteins function in the regulation of a variety of physiological processes, including coagulation, fibrinolysis, development, malignancy, and inflammation. Expression of the encoded protein may be downregulated during pancreatic carcinogenesis. Alternative splicing results in multiple transcript variants for this gene. [provided by RefSeq, Jan 2013]
Synonyms:	MEPI; PANCPIN; PI14; TSA2004

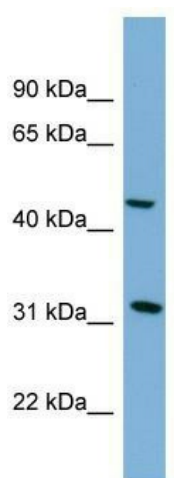


[View online »](#)

Note: Immunogen Sequence Homology: Pig: 100%; Horse: 100%; Human: 100%; Mouse: 100%; Bovine: 100%; Rabbit: 100%; Rat: 93%; Dog: 86%; Guinea pig: 77%

Protein Families: Druggable Genome, Secreted Protein

Product images:



WB Suggested Anti-SERPINI2 Antibody Titration: 0.2-1 ug/ml; ELISA Titer: 1:312500; Positive Control: COLO205 cell lysate SERPINI2 is supported by BioGPS gene expression data to be expressed in COLO205