

## Product datasheet for **TA345147**

### **PIN4 Rabbit Polyclonal Antibody**

#### **Product data:**

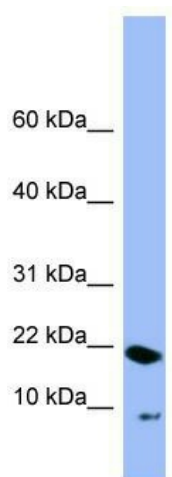
Product Type:	Primary Antibodies
Applications:	WB
Recommended Dilution:	WB
Reactivity:	Human
Host:	Rabbit
Isotype:	IgG
Clonality:	Polyclonal
Immunogen:	The immunogen for anti-PIN4 antibody: synthetic peptide directed towards the N terminal of human PIN4. Synthetic peptide located within the following region: MPMAGLLKGLVRQLERFSVQQQASKMPPKGGKSGSGKAGKGGGAASGSDSAD
Formulation:	Liquid. Purified antibody supplied in 1x PBS buffer with 0.09% (w/v) sodium azide and 2% sucrose. <i>Note that this product is shipped as lyophilized powder to China customers.</i>
Purification:	Affinity Purified
Conjugation:	Unconjugated
Storage:	Store at -20°C as received.
Stability:	Stable for 12 months from date of receipt.
Predicted Protein Size:	16 kDa
Gene Name:	peptidylprolyl cis/trans isomerase, NIMA-interacting 4
Database Link:	<a href="#">NP_006214</a> <a href="#">Entrez Gene 5303 Human</a> <a href="#">Q9Y237</a>
Background:	This gene encodes a member of the parvulin subfamily of the peptidyl-prolyl cis/trans isomerase protein family. The encoded protein catalyzes the isomerization of peptidylprolyl bonds, and may play a role in the cell cycle, chromatin remodeling, and/or ribosome biogenesis. The encoded protein may play an additional role in the mitochondria. [provided by RefSeq, Dec 2009]
Synonyms:	EPVH; PAR14; PAR17



[View online »](#)

Note: Immunogen Sequence Homology: Human: 100%; Rat: 90%

### Product images:



WB Suggested Anti-PIN4 Antibody Titration: 0.2-1 ug/ml; ELISA Titer: 1:12500; Positive Control: 293T cell lysate PIN4 is strongly supported by BioGPS gene expression data to be expressed in Human HEK293T cells