

## Product datasheet for **TA345141**

### PPP2R5E Rabbit Polyclonal Antibody

#### Product data:

Product Type:	Primary Antibodies
Applications:	WB
Recommended Dilution:	WB
Reactivity:	Mouse
Host:	Rabbit
Isotype:	IgG
Clonality:	Polyclonal
Immunogen:	The immunogen for anti-Ppp2r5e antibody: synthetic peptide corresponding to a region of Mouse. Synthetic peptide located within the following region: SCNIFRTLPPSDSNEFDPEEDEPTLEASWPHLQLVYEFFIRFLESQEFQP
Formulation:	Liquid. Purified antibody supplied in 1x PBS buffer with 0.09% (w/v) sodium azide and 2% sucrose. <i>Note that this product is shipped as lyophilized powder to China customers.</i>
Purification:	Affinity Purified
Conjugation:	Unconjugated
Storage:	Store at -20°C as received.
Stability:	Stable for 12 months from date of receipt.
Predicted Protein Size:	51 kDa
Gene Name:	protein phosphatase 2 regulatory subunit B'epsilon
Database Link:	<a href="#">NP_006237</a> <a href="#">Entrez Gene 26932 Mouse</a> <a href="#">Q16537</a>
Background:	The B regulatory subunit might modulate substrate selectivity and catalytic activity, and also might direct the localization of the catalytic enzyme to a particular subcellular compartment. Interacts with cyclin G in vitro.
Synonyms:	4633401M22Rik; A1449017; B56beta; epsilon isoform; epsilon isoform of regulatory subunit B56; protein phosphatase 2; protein phosphatase 2A; protein phosphatase 2A subunit beta; regulatory subunit B (B56)



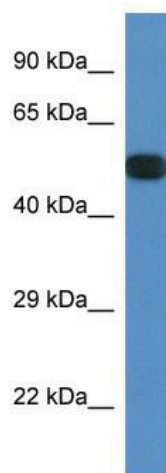
[View online »](#)

**Note:** Immunogen Sequence Homology: Dog: 100%; Pig: 100%; Rat: 100%; Horse: 100%; Human: 100%; Mouse: 100%; Bovine: 100%; Rabbit: 100%; Zebrafish: 100%; Guinea pig: 100%; Goat: 79%

**Protein Families:** Druggable Genome, Phosphatase

**Protein Pathways:** Oocyte meiosis, Wnt signaling pathway

**Product images:**



WB Suggested Anti-Ppp2r5e Antibody; Titration: 1.0 ug/ml; Positive Control: Mouse Spleen