

## Product datasheet for **TA345139**

### PKC eta (PRKCH) Rabbit Polyclonal Antibody

#### Product data:

Product Type:	Primary Antibodies
Applications:	WB
Recommended Dilution:	WB
Reactivity:	Human, Mouse
Host:	Rabbit
Isotype:	IgG
Clonality:	Polyclonal
Immunogen:	The immunogen for anti-PRKCH antibody: synthetic peptide directed towards the N terminal of human PRKCH. Synthetic peptide located within the following region: KKGHQLLDPYLTVSVDQVRVGQTSTKQKTNKPTYNEEFCANVTDGGHLEL
Formulation:	Liquid. Purified antibody supplied in 1x PBS buffer with 0.09% (w/v) sodium azide and 2% sucrose. <i>Note that this product is shipped as lyophilized powder to China customers.</i>
Purification:	Affinity Purified
Conjugation:	Unconjugated
Storage:	Store at -20°C as received.
Stability:	Stable for 12 months from date of receipt.
Predicted Protein Size:	78 kDa
Gene Name:	protein kinase C eta
Database Link:	<a href="#">NP_006246</a> <a href="#">Entrez Gene 18755 Mouse</a> <a href="#">Entrez Gene 5583 Human</a> <a href="#">P24723</a>



[View online »](#)

**Background:**

Protein kinase C (PKC) is a family of serine- and threonine-specific protein kinases that can be activated by calcium and the second messenger diacylglycerol. PKC family members phosphorylate a wide variety of protein targets and are known to be involved in diverse cellular signaling pathways. PKC family members also serve as major receptors for phorbol esters, a class of tumor promoters. Each member of the PKC family has a specific expression profile and is believed to play a distinct role in cells. The protein encoded by this gene is one of the PKC family members. It is a calcium-independent and phospholipids-dependent protein kinase. It is predominantly expressed in epithelial tissues and has been shown to reside specifically in the cell nucleus. This protein kinase can regulate keratinocyte differentiation by activating the MAP kinase MAPK13 (p38delta)-activated protein kinase cascade that targets CCAAT/enhancer-binding protein alpha (CEBPA). It is also found to mediate the transcription activation of the transglutaminase 1 (TGM1) gene. [provided by RefSeq, Jul 2008]

**Synonyms:**

nPKC-eta; PKC-L; PKCL; PRKCL

**Note:**

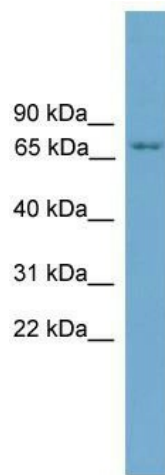
Immunogen Sequence Homology: Dog: 100%; Pig: 100%; Rat: 100%; Horse: 100%; Human: 100%; Mouse: 100%; Bovine: 100%; Zebrafish: 85%; Guinea pig: 79%

**Protein Families:**

Druggable Genome, Protein Kinase

**Protein Pathways:**

Tight junction, Vascular smooth muscle contraction

**Product images:**

WB Suggested Anti-PRKCH Antibody; Titration: 1.0 ug/ml; Positive Control: Jurkat Whole Cell PRKCH is strongly supported by BioGPS gene expression data to be expressed in Human Jurkat cells