

## Product datasheet for **TA345138**

### PKC eta (PRKCH) Rabbit Polyclonal Antibody

#### Product data:

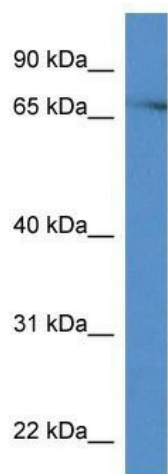
Product Type:	Primary Antibodies
Applications:	WB
Recommended Dilution:	WB
Reactivity:	Mouse
Host:	Rabbit
Isotype:	IgG
Clonality:	Polyclonal
Immunogen:	The immunogen for anti-Prkch antibody: synthetic peptide corresponding to a region of Mouse. Synthetic peptide located within the following region: TPDYIAPEILQEMLYGPAVDWWAMGVLLYEMLCGHAPFEAENEDDLFEAI
Formulation:	Liquid. Purified antibody supplied in 1x PBS buffer with 0.09% (w/v) sodium azide and 2% sucrose. <i>Note that this product is shipped as lyophilized powder to China customers.</i>
Purification:	Affinity Purified
Conjugation:	Unconjugated
Storage:	Store at -20°C as received.
Stability:	Stable for 12 months from date of receipt.
Predicted Protein Size:	75 kDa
Gene Name:	protein kinase C eta
Database Link:	<a href="#">NP_006246</a> <a href="#">Entrez Gene 18755 Mouse</a> <a href="#">P24723</a>
Background:	This is calcium-independent, phospholipid-dependent, serine- and threonine-specific enzyme.
Synonyms:	nPKC-eta; PKC-L; PKCL; PRKCL
Note:	Immunogen Sequence Homology: Dog: 100%; Pig: 100%; Rat: 100%; Horse: 100%; Human: 100%; Mouse: 100%; Bovine: 100%; Rabbit: 100%; Zebrafish: 100%; Guinea pig: 100%
Protein Families:	Druggable Genome, Protein Kinase



[View online »](#)

Protein Pathways: Tight junction, Vascular smooth muscle contraction

**Product images:**



WB Suggested Anti-Prkch Antibody; Titration: 1.0 ug/ml; Positive Control: Mouse Brain