

Product datasheet for **TA345136**

RAD21 Rabbit Polyclonal Antibody

Product data:

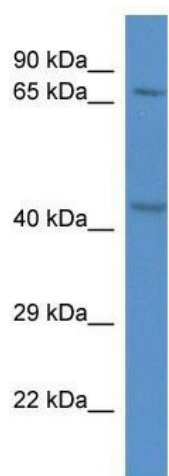
Product Type:	Primary Antibodies
Applications:	WB
Recommended Dilution:	WB
Reactivity:	Rat
Host:	Rabbit
Isotype:	IgG
Clonality:	Polyclonal
Immunogen:	The immunogen for anti-Rad21 antibody: synthetic peptide corresponding to a region of Rat. Synthetic peptide located within the following region: FSLPAQPLWNNRLLKLFTRCLTLPVPEDLRKRRKGGEADNLDFLKEFEN
Formulation:	Liquid. Purified antibody supplied in 1x PBS buffer with 0.09% (w/v) sodium azide and 2% sucrose. <i>Note that this product is shipped as lyophilized powder to China customers.</i>
Purification:	Affinity Purified
Conjugation:	Unconjugated
Storage:	Store at -20°C as received.
Stability:	Stable for 12 months from date of receipt.
Predicted Protein Size:	72 kDa
Gene Name:	RAD21 cohesin complex component
Database Link:	NP_006256 Entrez Gene 314949 Rat O60216
Background:	The function remains unknown.
Synonyms:	CDLS4; hHR21; HR21; HRAD21; MCD1; NXP1; SCC1
Note:	Immunogen Sequence Homology: Dog: 100%; Pig: 100%; Rat: 100%; Horse: 100%; Human: 100%; Mouse: 100%; Bovine: 100%; Rabbit: 100%; Guinea pig: 100%; Zebrafish: 93%
Protein Families:	Druggable Genome



[View online »](#)

Protein Pathways: Cell cycle

Product images:



WB Suggested Anti-Rad21 Antibody; Titration: 1.0 ug/ml; Positive Control: Rat Heart