

Product datasheet for **TA345135**

RRAS Rabbit Polyclonal Antibody

Product data:

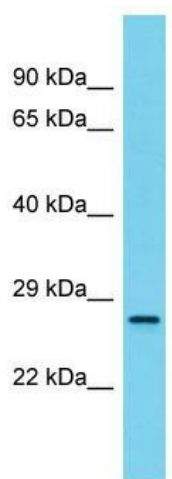
| | |
|-------------------------|--|
| Product Type: | Primary Antibodies |
| Applications: | WB |
| Recommended Dilution: | WB |
| Reactivity: | Rat |
| Host: | Rabbit |
| Isotype: | IgG |
| Clonality: | Polyclonal |
| Immunogen: | The immunogen for Anti-Rras antibody is: synthetic peptide directed towards the C-terminal region of Rat Rras. Synthetic peptide located within the following region: ASSFSASHHMTYFEASAKLRLNVDEAFEQLVRTVRKYQEQLPPSPPSAP |
| Formulation: | Liquid. Purified antibody supplied in 1x PBS buffer with 0.09% (w/v) sodium azide and 2% sucrose. <i>Note that this product is shipped as lyophilized powder to China customers.</i> |
| Purification: | Affinity Purified |
| Conjugation: | Unconjugated |
| Storage: | Store at -20°C as received. |
| Stability: | Stable for 12 months from date of receipt. |
| Predicted Protein Size: | 23 kDa |
| Gene Name: | related RAS viral (r-ras) oncogene homolog |
| Database Link: | NP_006261 Entrez Gene 361568 Rat P10301 |
| Background: | Regulates the organization of the actin cytoskeleton. |
| Synonyms: | Oncogene RRAS; related RAS viral (r-ras) oncogene homolog |
| Note: | Immunogen Sequence Homology: Dog: 100%; Pig: 100%; Rat: 100%; Human: 100%; Mouse: 100%; Bovine: 100%; Guinea pig: 100% |
| Protein Families: | Druggable Genome |



[View online »](#)

Protein Pathways: MAPK signaling pathway, Regulation of actin cytoskeleton, Tight junction

Product images:



Host: Rabbit; Target Name: Rras; Sample Tissue: Rat Stomach lysates; Antibody Dilution: 1.0 ug/ml