

Product datasheet for **TA345132**

Tbp7 (PSMC4) Rabbit Polyclonal Antibody

Product data:

Product Type:	Primary Antibodies
Applications:	WB
Recommended Dilution:	WB
Reactivity:	Human, Mouse
Host:	Rabbit
Isotype:	IgG
Clonality:	Polyclonal
Immunogen:	The immunogen for anti-PSMC4 antibody: synthetic peptide directed towards the N terminal of human PSMC4. Synthetic peptide located within the following region: MEEIGILVEKAQDEIPALSVSRPQTGLSFLGPEPEDLEDLYSRYKKLQQE
Formulation:	Liquid. Purified antibody supplied in 1x PBS buffer with 0.09% (w/v) sodium azide and 2% sucrose. <i>Note that this product is shipped as lyophilized powder to China customers.</i>
Purification:	Affinity Purified
Conjugation:	Unconjugated
Storage:	Store at -20°C as received.
Stability:	Stable for 12 months from date of receipt.
Predicted Protein Size:	47 kDa
Gene Name:	proteasome 26S subunit, ATPase 4
Database Link:	NP_006494 Entrez Gene 23996 Mouse Entrez Gene 5704 Human P43686



[View online »](#)

Background:

The 26S proteasome is a multicatalytic proteinase complex with a highly ordered structure composed of 2 complexes, a 20S core and a 19S regulator. The 20S core is composed of 4 rings of 28 non-identical subunits; 2 rings are composed of 7 alpha subunits and 2 rings are composed of 7 beta subunits. The 19S regulator is composed of a base, which contains 6 ATPase subunits and 2 non-ATPase subunits, and a lid, which contains up to 10 non-ATPase subunits. Proteasomes are distributed throughout eukaryotic cells at a high concentration and cleave peptides in an ATP/ubiquitin-dependent process in a non-lysosomal pathway. This gene encodes a member of the triple-A family of ATPases that is a component of the 19S regulatory subunit and plays a role in 26S proteasome assembly. The encoded protein interacts with gankyrin, a liver oncoprotein, and may also play a role in Parkinson's disease through interactions with synphilin-1. Alternatively spliced transcript variants encoding multiple isoforms have been observed for this gene. [provided by RefSeq, Jul 2012]

Synonyms:

MIP224; RPT3; S6; TBP-7; TBP7

Note:

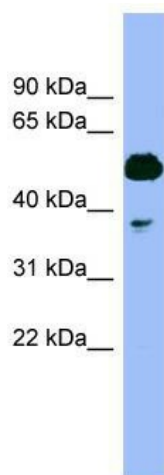
Immunogen Sequence Homology: Dog: 100%; Pig: 100%; Rat: 100%; Goat: 100%; Horse: 100%; Human: 100%; Mouse: 100%; Bovine: 100%; Rabbit: 100%; Guinea pig: 100%; Zebrafish: 93%; Yeast: 90%

Protein Families:

Druggable Genome

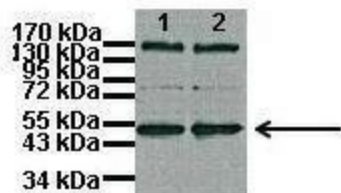
Protein Pathways:

Proteasome

Product images:

WB Suggested Anti-PSMC4 Antibody Titration:
0.2-1 ug/ml; ELISA Titer: 1:312500; Positive
Control: Human Muscle

PSMC4



Lanes: 1: 10ug proteasome fraction from C57B1/6J mouse brain, 2: 10ug proteasome fraction from BLAB/C mouse brain; Primary Antibody Dilution: 1:500; Secondary Antibody: Anti-rabbit HRP; Secondary Antibody Dilution: 1:5000; Gene Name: PSMC4; Submitted by: