

## Product datasheet for **TA345130**

### RP2 Rabbit Polyclonal Antibody

#### Product data:

Product Type:	Primary Antibodies
Applications:	IHC, WB
Recommended Dilution:	WB, IHC
Reactivity:	Human
Host:	Rabbit
Isotype:	IgG
Clonality:	Polyclonal
Immunogen:	The immunogen for anti-RP2 antibody: synthetic peptide directed towards the middle region of human RP2. Synthetic peptide located within the following region: LEFNGDGAVEVCQLIVNEIFNGTKMFVSESKETASGDVDSFYNFADIQMG
Formulation:	Liquid. Purified antibody supplied in 1x PBS buffer with 0.09% (w/v) sodium azide and 2% sucrose.
Purification:	Affinity Purified
Conjugation:	Unconjugated
Storage:	Store at -20°C as received.
Stability:	Stable for 12 months from date of receipt.
Predicted Protein Size:	40 kDa
Gene Name:	retinitis pigmentosa 2 (X-linked recessive)
Database Link:	<a href="#">NP_008846</a> <a href="#">Entrez Gene 6102 Human</a> <a href="#">O75695</a>
Background:	The RP2 locus has been implicated as one cause of X-linked retinitis pigmentosa. The predicted gene product shows homology with human cofactor C, a protein involved in the ultimate step of beta-tubulin folding. Progressive retinal degeneration may therefore be due to the accumulation of incorrectly-folded photoreceptor or neuron-specific tubulin isoforms followed by progressive cell death [provided by RefSeq, Jul 2008].
Synonyms:	DELXp11.3; NM23-H10; NME10; TBCCD2; XRP2

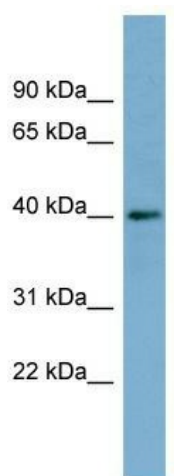


[View online »](#)

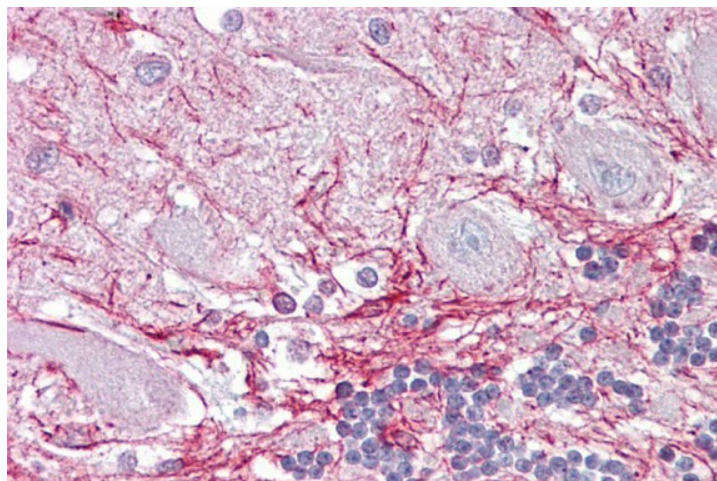
**Note:** Immunogen Sequence Homology: Dog: 100%; Rat: 100%; Human: 100%; Mouse: 100%; Pig: 93%; Horse: 93%; Bovine: 93%; Guinea pig: 93%; Rabbit: 86%

**Protein Families:** Druggable Genome

**Product images:**



WB Suggested Anti-RP2 Antibody Titration: 0.2-1 ug/ml; ELISA Titer: 1:1562500; Positive Control: Human Muscle



Immunohistochemistry with Brain, cerebellum tissue at an antibody concentration of 5 ug/ml using anti-RP2 antibody