

Product datasheet for **TA345129**

RPE Rabbit Polyclonal Antibody

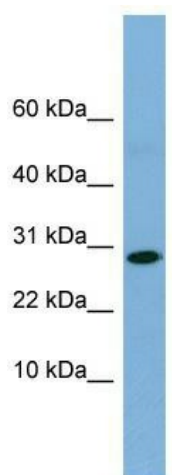
Product data:

Product Type:	Primary Antibodies
Applications:	IHC, WB
Recommended Dilution:	WB
Reactivity:	Human
Host:	Rabbit
Isotype:	IgG
Clonality:	Polyclonal
Immunogen:	The immunogen for anti-RPE antibody: synthetic peptide directed towards the middle region of human RPE. Synthetic peptide located within the following region: MMVSKPEQWVKPMAVAGANQYTFHLEATENPGALIKDIRENGMKVGLAIK
Formulation:	Liquid. Purified antibody supplied in 1x PBS buffer with 0.09% (w/v) sodium azide and 2% sucrose. <i>Note that this product is shipped as lyophilized powder to China customers.</i>
Purification:	Affinity Purified
Conjugation:	Unconjugated
Storage:	Store at -20°C as received.
Stability:	Stable for 12 months from date of receipt.
Predicted Protein Size:	25 kDa
Gene Name:	ribulose-5-phosphate-3-epimerase
Database Link:	NP_954699 Entrez Gene 6120 Human Q96AT9
Background:	The function of this protein remains unknown.
Synonyms:	RPE2-1
Note:	Immunogen Sequence Homology: Dog: 100%; Pig: 100%; Rat: 100%; Horse: 100%; Human: 100%; Mouse: 100%; Rabbit: 100%; Bovine: 93%; Zebrafish: 93%; Guinea pig: 93%
Protein Pathways:	Metabolic pathways, Pentose and glucuronate interconversions, Pentose phosphate pathway

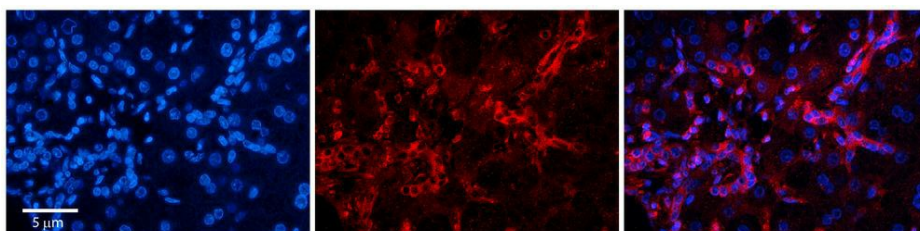


[View online »](#)

Product images:



WB Suggested Anti-RPE Antibody Titration: 0.2-1 ug/ml; ELISA Titer: 1:312500; Positive Control: Human Muscle



Rabbit Anti-RPE Antibody; Formalin Fixed Paraffin Embedded Tissue: Human Adult Liver; Observed Staining: Cytoplasm but only in connective tissue cells in the interlobular septum, very low tissue distribution; Primary Antibody Concentration: 1:100; Seconda