

## Product datasheet for **TA345128**

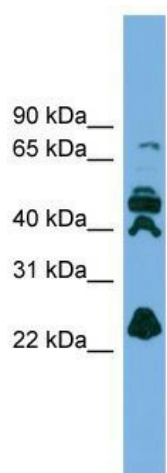
### RPE Rabbit Polyclonal Antibody

#### Product data:

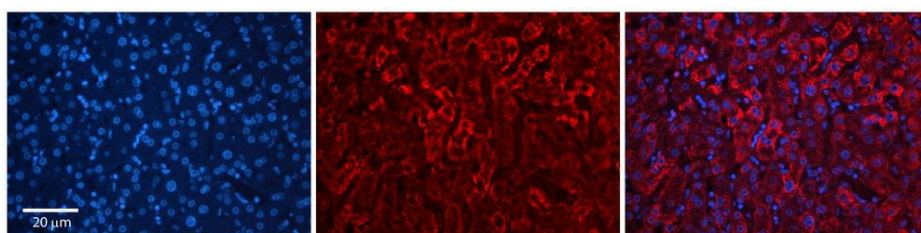
Product Type:	Primary Antibodies
Applications:	IHC, WB
Recommended Dilution:	WB
Reactivity:	Human
Host:	Rabbit
Isotype:	IgG
Clonality:	Polyclonal
Immunogen:	The immunogen for anti-RPE antibody: synthetic peptide directed towards the N terminal of human RPE. Synthetic peptide located within the following region: ALIKDIRENGMKSCSVTQAEVQWHSQGPLQVGLAIKPGTSVEYLAPWANQ
Formulation:	Liquid. Purified antibody supplied in 1x PBS buffer with 0.09% (w/v) sodium azide and 2% sucrose. <i>Note that this product is shipped as lyophilized powder to China customers.</i>
Purification:	Affinity Purified
Conjugation:	Unconjugated
Storage:	Store at -20°C as received.
Stability:	Stable for 12 months from date of receipt.
Predicted Protein Size:	19 kDa
Gene Name:	ribulose-5-phosphate-3-epimerase
Database Link:	<a href="#">NP_008847</a> <a href="#">Entrez Gene 6120 Human</a> <a href="#">Q96AT9</a>
Background:	The function of this protein remains unknown.
Synonyms:	RPE2-1
Note:	Immunogen Sequence Homology: Human: 100%; Bovine: 100%; Dog: 93%; Pig: 93%; Rat: 93%; Horse: 93%; Mouse: 93%; Rabbit: 93%; Guinea pig: 93%; Zebrafish: 86%
Protein Pathways:	Metabolic pathways, Pentose and glucuronate interconversions, Pentose phosphate pathway



[View online »](#)

**Product images:**

WB Suggested Anti-RPE Antibody Titration: 0.2-1 ug/ml; ELISA Titer: 1:1562500; Positive Control: ACHN cell lysate RPE is strongly supported by BioGPS gene expression data to be expressed in Human ACHN cells



Rabbit Anti-RPE Antibody; Formalin Fixed Paraffin Embedded Tissue: Human Adult Liver; Observed Staining: Cytoplasm in hepatocytes, strong signal, wide tissue distribution; Primary Antibody Concentration: 1:100; Secondary Antibody: Donkey anti-Rabbit-Cy3;