

Product datasheet for **TA345125**

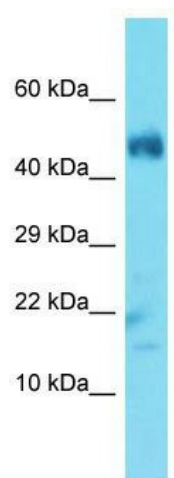
UBL3 Rabbit Polyclonal Antibody

Product data:

Product Type:	Primary Antibodies
Applications:	WB
Recommended Dilution:	WB
Reactivity:	Mouse
Host:	Rabbit
Isotype:	IgG
Clonality:	Polyclonal
Immunogen:	The immunogen for Anti-Ubl3 antibody is: synthetic peptide directed towards the N-terminal region of Mouse Ubl3. Synthetic peptide located within the following region: VPADMINLRLILVSGKTKEFLFSPNDSASDIAKHVDNWPMDWEEEQVSS
Formulation:	Liquid. Purified antibody supplied in 1x PBS buffer with 0.09% (w/v) sodium azide and 2% sucrose. <i>Note that this product is shipped as lyophilized powder to China customers.</i>
Purification:	Affinity Purified
Conjugation:	Unconjugated
Storage:	Store at -20°C as received.
Stability:	Stable for 12 months from date of receipt.
Predicted Protein Size:	13 kDa
Gene Name:	ubiquitin like 3
Database Link:	NP_009037 Entrez Gene 24109 Mouse O95164
Background:	The function of this protein remains unknown.
Synonyms:	HCG-1; PNSC1
Note:	Immunogen Sequence Homology: Dog: 100%; Pig: 100%; Rat: 100%; Horse: 100%; Human: 100%; Mouse: 100%; Bovine: 100%; Rabbit: 100%; Zebrafish: 100%; Guinea pig: 93%
Protein Families:	Druggable Genome



[View online »](#)

Product images:

Host: Rabbit; Target Name: Ubl3; Sample Tissue: Mouse Muscle lysates; Antibody Dilution: 1.0 ug/ml