

Product datasheet for **TA345123**

Methionine Sulfoxide Reductase A (MSRA) Rabbit Polyclonal Antibody

Product data:

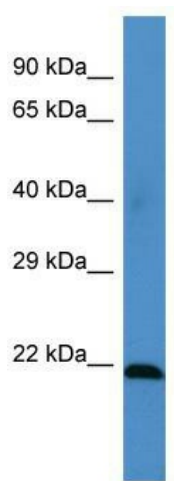
Product Type:	Primary Antibodies
Applications:	WB
Recommended Dilution:	WB
Reactivity:	Human
Host:	Rabbit
Isotype:	IgG
Clonality:	Polyclonal
Immunogen:	The immunogen for Anti-MSRA antibody is: synthetic peptide directed towards the middle region of Human MSRA. Synthetic peptide located within the following region: VYSTQVGFAGGYTSNPTYKEVCSEKTGHAEVVRVVYQPEHMSFEELLKVF
Formulation:	Liquid. Purified antibody supplied in 1x PBS buffer with 0.09% (w/v) sodium azide and 2% sucrose. <i>Note that this product is shipped as lyophilized powder to China customers.</i>
Purification:	Affinity Purified
Conjugation:	Unconjugated
Storage:	Store at -20°C as received.
Stability:	Stable for 12 months from date of receipt.
Predicted Protein Size:	21 kDa
Gene Name:	methionine sulfoxide reductase A
Database Link:	NP_036463 Entrez Gene 4482 Human Q9UJ68
Background:	This gene encodes a ubiquitous and highly conserved protein that carries out the enzymatic reduction of methionine sulfoxide to methionine. Human and animal studies have shown the highest levels of expression in kidney and nervous tissue. The protein functions in the repair of oxidatively damaged proteins to restore biological activity. Alternative splicing results in multiple transcript variants. [provided by RefSeq, May 2014]
Synonyms:	PMSR



[View online »](#)

Note: Immunogen Sequence Homology: Rat: 100%; Horse: 100%; Human: 100%; Mouse: 100%; Pig: 93%; Rabbit: 93%; Dog: 86%; Bovine: 86%; Guinea pig: 86%

Product images:



Host: Rabbit; Target Name: MSRA; Sample Tissue: HT1080 Whole Cell lysates; Antibody Dilution: 1.0 ug/ml; MSRA is supported by BioGPS gene expression data to be expressed in HT1080