

## Product datasheet for **TA345120**

### MKLN1 Rabbit Polyclonal Antibody

#### Product data:

Product Type:	Primary Antibodies
Applications:	WB
Recommended Dilution:	WB
Reactivity:	Human
Host:	Rabbit
Isotype:	IgG
Clonality:	Polyclonal
Immunogen:	The immunogen for Anti-MKLN1 antibody is: synthetic peptide directed towards the N-terminal region of Human MKLN1. Synthetic peptide located within the following region: ADFWAYSVKENQWTCISRDEKENGPSARSCHKMCIDIQRRQIYTLGRYL
Formulation:	Liquid. Purified antibody supplied in 1x PBS buffer with 0.09% (w/v) sodium azide and 2% sucrose.
Purification:	Affinity Purified
Conjugation:	Unconjugated
Storage:	Store at -20°C as received.
Stability:	Stable for 12 months from date of receipt.
Predicted Protein Size:	58 kDa
Gene Name:	muskelin 1
Database Link:	<a href="#">NP_037387</a> <a href="#">Entrez Gene 4289 Human</a> <a href="#">Q9UL63</a>



[View online »](#)

**Background:**

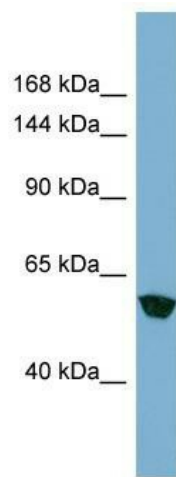
Muskelin is an intracellular protein that acts as a mediator of cell spreading and cytoskeletal responses to the extracellular matrix component thrombospondin I (MIM 188060) (Adams et al., 1998 [PubMed 9724633]). [supplied by OMIM, Mar 2008]. Transcript Variant: This variant (2) differs in the 5' UTR, lacks a portion of the 5' coding region, and initiates translation at a downstream start codon, compared to variant 1. The encoded isoform (2) has a distinct N-terminus and is longer than isoform 1. Sequence Note: This RefSeq record was created from transcript and genomic sequence data to make the sequence consistent with the reference genome assembly. The genomic coordinates used for the transcript record were based on transcript alignments. ##Evidence-Data-START## Transcript exon combination :: BC067825.1, AF047489.1 [ECO:0000332] RNAseq introns :: single sample supports all introns ERS025081, ERS025082 [ECO:0000348] ##Evidence-Data-END##

**Synonyms:**

TWA2

**Note:**

Immunogen Sequence Homology: Dog: 100%; Pig: 100%; Rat: 100%; Human: 100%; Mouse: 100%; Bovine: 100%; Rabbit: 100%; Guinea pig: 100%; Zebrafish: 93%

**Product images:**

Host: Rabbit; Target Name: MKLN1; Sample Tissue: HT1080 Whole Cell lysates; Antibody Dilution: 1.0 ug/ml; MKLN1 is supported by BioGPS gene expression data to be expressed in HT1080