

Product datasheet for **TA345115**

MOK protein kinase (MOK) Rabbit Polyclonal Antibody

Product data:

Product Type:	Primary Antibodies
Applications:	WB
Recommended Dilution:	WB
Reactivity:	Human
Host:	Rabbit
Isotype:	IgG
Clonality:	Polyclonal
Immunogen:	The immunogen for anti-RAGE antibody: synthetic peptide directed towards the middle region of human RAGE. Synthetic peptide located within the following region: TTNLSPQCLSLHAMVAYDPDERIAAHQALQHPYFQEQRKTEKRALGSHR
Formulation:	Liquid. Purified antibody supplied in 1x PBS buffer with 0.09% (w/v) sodium azide and 2% sucrose. <i>Note that this product is shipped as lyophilized powder to China customers.</i>
Purification:	Affinity Purified
Conjugation:	Unconjugated
Storage:	Store at -20°C as received.
Stability:	Stable for 12 months from date of receipt.
Predicted Protein Size:	48 kDa
Gene Name:	MOK protein kinase
Database Link:	NP_055041 Entrez Gene 5891 Human Q9UQ07
Background:	This gene belongs to the MAP kinase superfamily. The gene was found to be regulated by caudal type transcription factor 2 (Cdx2) protein. The encoded protein, which is localized to epithelial cells in the intestinal crypt, may play a role in growth arrest and differentiation of cells of upper crypt and lower villus regions. Multiple alternatively spliced transcript variants encoding different isoforms have been observed for this gene. [provided by RefSeq, Dec 2012]



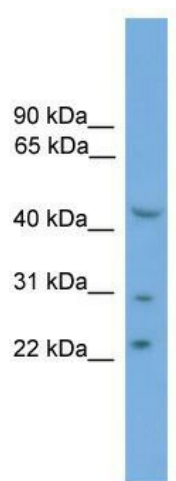
[View online »](#)

Synonyms: RAGE; RAGE-1; RAGE1; STK30

Note: Immunogen Sequence Homology: Pig: 100%; Human: 100%; Mouse: 100%; Guinea pig: 100%; Dog: 93%; Horse: 93%; Bovine: 93%; Rabbit: 93%; Goat: 79%

Protein Families: Druggable Genome, Protein Kinase

Product images:



WB Suggested Anti-RAGE Antibody Titration: 0.2-1 ug/ml; ELISA Titer: 1:62500; Positive Control: OVCAR-3 cell lysate