

Product datasheet for **TA345114**

C22orf28 (RTCB) Rabbit Polyclonal Antibody

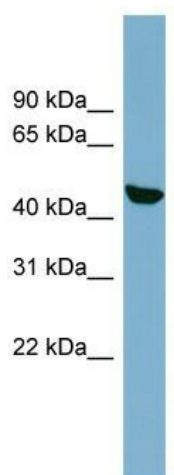
Product data:

Product Type:	Primary Antibodies
Applications:	IHC, WB
Recommended Dilution:	WB
Reactivity:	Human
Host:	Rabbit
Isotype:	IgG
Clonality:	Polyclonal
Immunogen:	The immunogen for anti-C22orf28 antibody: synthetic peptide directed towards the N terminal of human C22orf28. Synthetic peptide located within the following region: PEAVSPGGVGFINDINCGVRLLRNLDESVDVQPVKEQLAQAMFDHIPVGVG
Formulation:	Liquid. Purified antibody supplied in 1x PBS buffer with 0.09% (w/v) sodium azide and 2% sucrose. <i>Note that this product is shipped as lyophilized powder to China customers.</i>
Purification:	Affinity Purified
Conjugation:	Unconjugated
Storage:	Store at -20°C as received.
Stability:	Stable for 12 months from date of receipt.
Predicted Protein Size:	55 kDa
Gene Name:	RNA 2',3'-cyclic phosphate and 5'-OH ligase
Database Link:	NP_055121 Entrez Gene 51493 Human Q9Y3I0
Background:	The function of this protein remains unknown.
Synonyms:	C22orf28; DJ149A16.6; FAAP; HSPC117
Note:	Immunogen Sequence Homology: Dog: 100%; Pig: 100%; Rat: 100%; Horse: 100%; Human: 100%; Mouse: 100%; Bovine: 100%; Rabbit: 100%; Guinea pig: 100%; Zebrafish: 93%

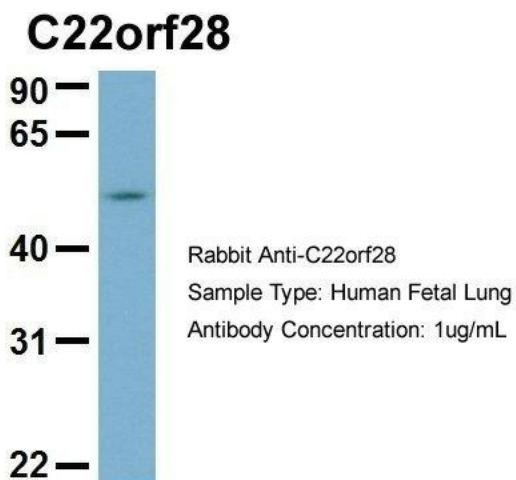


[View online »](#)

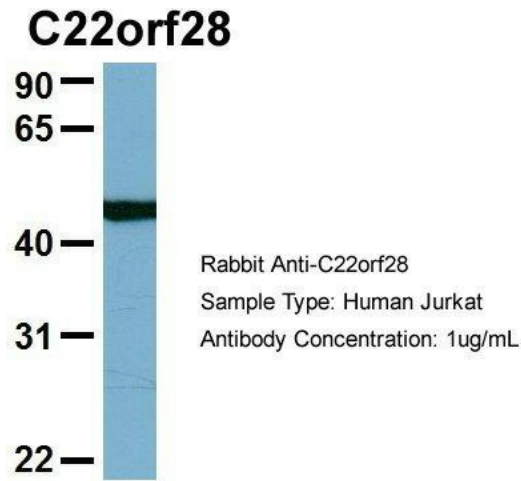
Product images:



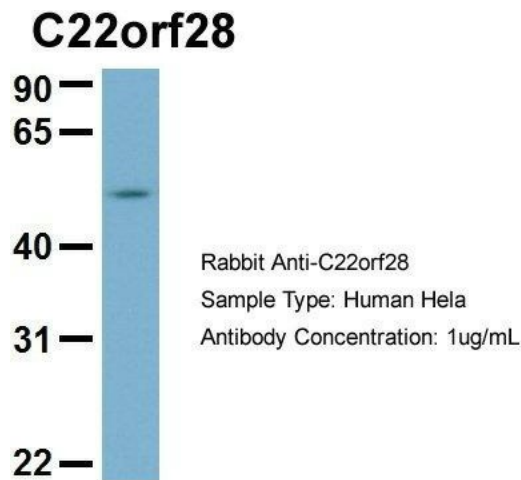
WB Suggested Anti-C22orf28 Antibody Titration: 0.2-1 ug/ml; ELISA Titer: 1:62500; Positive Control: HepG2 cell lysate



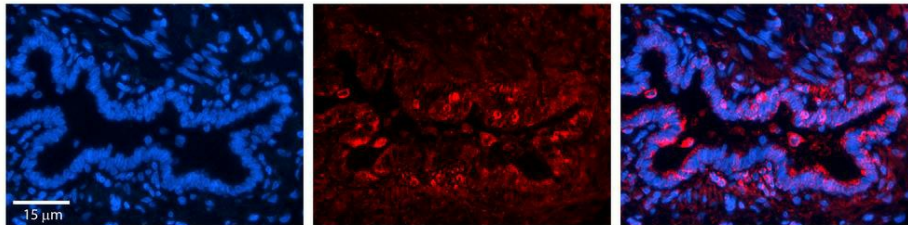
Host: Rabbit; Target Name: C22orf28; Sample Tissue: Human Fetal Lung; Antibody Dilution: 1.0 ug/ml



Host: Rabbit; Target Name: C22orf28; Sample Tissue: Jurkat; Antibody Dilution: 1.0 ug/ml; RTCB is supported by BioGPS gene expression data to be expressed in Jurkat



Host: Rabbit; Target Name: C22orf28; Sample Tissue: HeLa; Antibody Dilution: 1.0 ug/ml; RTCB is supported by BioGPS gene expression data to be expressed in HeLa



Rabbit Anti-RTCB Antibody; Formalin Fixed Paraffin Embedded Tissue: Human Bronchial Epithelial Tissue; Observed Staining: Cytoplasmic; Primary Antibody Concentration: 1:100; Secondary Antibody: Donkey anti-Rabbit-Cy3; Secondary Antibody Concentration: 1: