

## Product datasheet for TA345111

### PGM3 Rabbit Polyclonal Antibody

#### Product data:

Product Type:	Primary Antibodies
Applications:	WB
Recommended Dilution:	WB
Reactivity:	Human
Host:	Rabbit
Isotype:	IgG
Clonality:	Polyclonal
Immunogen:	The immunogen for anti-PGM3 antibody: synthetic peptide directed towards the N terminal of human PGM3. Synthetic peptide located within the following region: IDISEKEAVNLQQDAFVVIGRDTRPSSEKLSQSVIDGVTVLGGQFHDYGL
Formulation:	Liquid. Purified antibody supplied in 1x PBS buffer with 0.09% (w/v) sodium azide and 2% sucrose. <i>Note that this product is shipped as lyophilized powder to China customers.</i>
Purification:	Affinity Purified
Conjugation:	Unconjugated
Storage:	Store at -20°C as received.
Stability:	Stable for 12 months from date of receipt.
Predicted Protein Size:	60 kDa
Gene Name:	phosphoglucomutase 3
Database Link:	<a href="#">NP_056414</a> <a href="#">Entrez Gene 5238 Human</a> <a href="#">O95394</a>
Background:	This gene encodes a member of the phosphohexose mutase family. The encoded protein mediates both glycogen formation and utilization by catalyzing the interconversion of glucose-1-phosphate and glucose-6-phosphate. A non-synonymous single nucleotide polymorphism in this gene may play a role in resistance to diabetic nephropathy and neuropathy. Alternatively spliced transcript variants encoding multiple isoforms have been observed for this gene. [provided by RefSeq, Dec 2010]



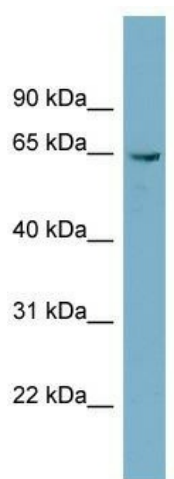
[View online »](#)

**Synonyms:** AGM1; IMD23; PAGM; PGM 3

**Note:** Immunogen Sequence Homology: Dog: 100%; Rat: 100%; Human: 100%; Mouse: 100%; Rabbit: 100%; Pig: 93%; Horse: 93%; Bovine: 93%; Guinea pig: 93%; Zebrafish: 79%

**Protein Pathways:** Amino sugar and nucleotide sugar metabolism

**Product images:**



WB Suggested Anti-PGM3 Antibody Titration: 0.2-1 ug/ml; ELISA Titer: 1:312500; Positive Control: HepG2 cell lysate PGM3 is strongly supported by BioGPS gene expression data to be expressed in Human HepG2 cells