

Product datasheet for **TA345109**

Gemin 4 (GEMIN4) Rabbit Polyclonal Antibody

Product data:

Product Type:	Primary Antibodies
Applications:	WB
Recommended Dilution:	WB
Reactivity:	Human
Host:	Rabbit
Isotype:	IgG
Clonality:	Polyclonal
Immunogen:	The immunogen for anti-GEMIN4 antibody: synthetic peptide directed towards the N terminal of human GEMIN4. Synthetic peptide located within the following region: QALAEKVKEAERDVSLTSLAKLPSETIFVGCFLHLLREWGEEELQAVLR
Formulation:	Liquid. Purified antibody supplied in 1x PBS buffer with 0.09% (w/v) sodium azide and 2% sucrose. <i>Note that this product is shipped as lyophilized powder to China customers.</i>
Purification:	Affinity Purified
Conjugation:	Unconjugated
Storage:	Store at -20°C as received.
Stability:	Stable for 12 months from date of receipt.
Predicted Protein Size:	120 kDa
Gene Name:	gem nuclear organelle associated protein 4
Database Link:	NP_056536 Entrez Gene 50628 Human P57678



[View online »](#)

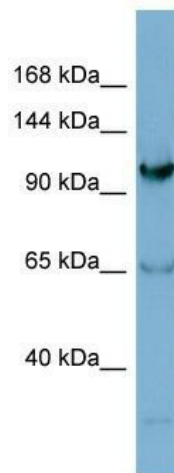
Background: The product of this gene is part of a large complex localized to the cytoplasm, nucleoli, and to discrete nuclear bodies called Gemini bodies (gems). The complex functions in spliceosomal snRNP assembly in the cytoplasm, and regenerates spliceosomes required for pre-mRNA splicing in the nucleus. The encoded protein directly interacts with a DEAD box protein and several spliceosome core proteins. Alternatively spliced transcript variants have been described, but their biological validity has not been determined. [provided by RefSeq, Jul 2008]

Synonyms: HC56; HCAP1; HHRF-1; p97

Note: Immunogen Sequence Homology: Dog: 100%; Rat: 100%; Human: 100%; Mouse: 100%; Rabbit: 100%; Pig: 93%; Horse: 93%; Guinea pig: 93%; Bovine: 92%

Protein Families: Druggable Genome

Product images:



WB Suggested Anti-GEMIN4 Antibody Titration: 0.2-1 ug/ml; ELISA Titer: 1:312500; Positive Control: Jurkat cell lysate GEMIN4 is strongly supported by BioGPS gene expression data to be expressed in Human Jurkat cells