

Product datasheet for **TA345108**

PNPLA8 Rabbit Polyclonal Antibody

Product data:

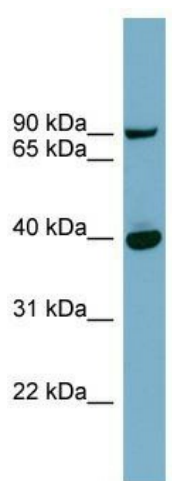
Product Type:	Primary Antibodies
Applications:	WB
Recommended Dilution:	WB
Reactivity:	Human
Host:	Rabbit
Isotype:	IgG
Clonality:	Polyclonal
Immunogen:	The immunogen for anti-PNPLA8 antibody: synthetic peptide directed towards the middle region of human PNPLA8. Synthetic peptide located within the following region: IDNRTRALVQALRRRTDPKLCITRVEELTFHLLFPEGKGVAVKERIIPY
Formulation:	Liquid. Purified antibody supplied in 1x PBS buffer with 0.09% (w/v) sodium azide and 2% sucrose.
Purification:	Affinity Purified
Conjugation:	Unconjugated
Storage:	Store at -20°C as received.
Stability:	Stable for 12 months from date of receipt.
Predicted Protein Size:	88 kDa
Gene Name:	patatin like phospholipase domain containing 8
Database Link:	NP_056538 Entrez Gene 50640 Human Q9NP80
Background:	This gene encodes a member of the patatin-like phospholipase domain containing protein family. Members of this family are phospholipases which catalyze the cleavage of fatty acids from membrane phospholipids. The product of this gene is a calcium-independent phospholipase. A pseudogene of this gene is located on the X chromosome. Multiple transcript variants encoding different isoforms have been found for this gene. [provided by RefSeq, Dec 2011]
Synonyms:	IPLA2(GAMMA); IPLA2-2; IPLA2G; iPLA2gamma



[View online »](#)

Note: Immunogen Sequence Homology: Dog: 100%; Pig: 100%; Rat: 100%; Horse: 100%; Human: 100%; Mouse: 100%; Bovine: 100%; Rabbit: 100%; Guinea pig: 100%; Zebrafish: 92%

Product images:



WB Suggested Anti-PNPLA8 Antibody Titration:
0.2-1 ug/ml; ELISA Titer: 1:312500; Positive
Control: 293T cell lysate