

Product datasheet for **TA345107**

Acetylcholinesterase (ACHE) Rabbit Polyclonal Antibody

Product data:

Product Type:	Primary Antibodies
Applications:	IHC, WB
Recommended Dilution:	IHC, WB, IF
Reactivity:	Human, Mouse
Host:	Rabbit
Isotype:	IgG
Clonality:	Polyclonal
Immunogen:	The immunogen for anti-ACHE antibody: synthetic peptide directed towards the N terminal of human ACHE. Synthetic peptide located within the following region: SMNYRVGAFGFLALPGSREAPGNVGLLDQRLALQWVQENVAAFGGDPTSV
Formulation:	Liquid. Purified antibody supplied in 1x PBS buffer with 0.09% (w/v) sodium azide and 2% sucrose. <i>Note that this product is shipped as lyophilized powder to China customers.</i>
Purification:	Affinity Purified
Conjugation:	Unconjugated
Storage:	Store at -20°C as received.
Stability:	Stable for 12 months from date of receipt.
Predicted Protein Size:	61 kDa
Gene Name:	acetylcholinesterase (Cartwright blood group)
Database Link:	NP_056646 Entrez Gene 11423 Mouse Entrez Gene 43 Human P22303
Background:	This gene encodes a member of the neuroD family of neurogenic basic helix-loop-helix (bHLH) proteins. Expression of this gene can induce transcription from neuron-specific promoters, such as the GAP-43 promoter, which contain a specific DNA sequence known as an E-box. The product of the human gene can induce neurogenic differentiation in non-neuronal cells in Xenopus embryos, and is thought to play a role in the determination and maintenance of neuronal cell fates. [provided by RefSeq, Jul 2008]



[View online »](#)

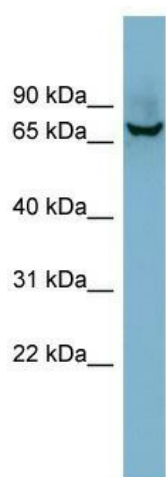
Synonyms: ACEE; ARACHE; N-ACHE; YT

Note: Immunogen Sequence Homology: Dog: 100%; Pig: 100%; Rat: 100%; Horse: 100%; Human: 100%; Mouse: 100%; Bovine: 100%; Rabbit: 100%; Guinea pig: 100%; Sheep: 91%; Zebrafish: 79%

Protein Families: Druggable Genome

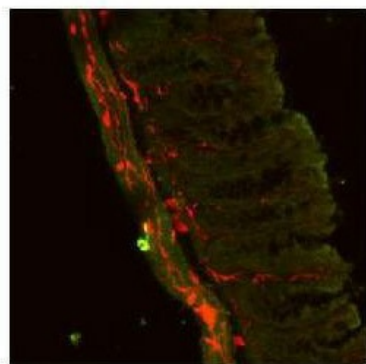
Protein Pathways: Glycerophospholipid metabolism

Product images:



WB Suggested Anti-ACHE Antibody Titration: 0.2-1 ug/ml; ELISA Titer: 1:312500; Positive Control: 721_B cell lysate

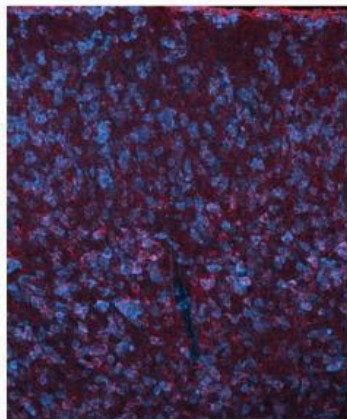
ACHE



Green: ACHE antibody
Red: Neural crest cells

Sample Type : Mouse Gut Tissue TgWnt1-Cre/+ Ednrbflex3/+ Rosa26YFPStop/YFPStop
Primary Antibody Dilution : 1:50
Secondary Antibody : Goat anti-rabbit-cy3
Secondary Antibody Dilution : 1:500
Color/Signal Descriptions : ACHE: Green
Neural crest cells:: RedGene

AChE



Red: Ache Cyan: Nissl (Neurons)

Sample Type : Adult mouse tectum
Primary Antibody Dilution : 1:1000
Secondary Antibody : Anti-rabbit-Cy3
Secondary Antibody Dilution : 1:1000
Color/Signal Descriptions : Red: Ache Cyan: Nissl (Neurons)
Gene Name : ACHESubmitted by : Joshua R. Sanes, Molecular a